

JUN Monoclonal Matched Antibody Pair, PBS Only

Catalog Number: **MP51323-1**

Capture Antibody Information

Catalog Number:
66313-2-PBS
Host:
Mouse
Isotype:
IgG1
Purification Method:
Protein G purification

Clone ID:
1E6A9
Reactivity:
human
GenBank:
BC068522
Immunogen Catalog Number:
Ag17639

Conjugate:
Unconjugated
Full name:
jun oncogene
Gene ID:
3725

Detection Antibody Information

Catalog Number:
60907-1-PBS
Host:
Mouse
Isotype:
IgG1
Purification Method:
Protein G Magarose purification

Clone ID:
1F12E3
Reactivity:
human
GenBank:
BC068522

Conjugate:
Unconjugated
Full name:
jun oncogene
Gene ID:
3725

Applications

Tested Applications:
Cytometric bead array

Range:
3.906-500 ng/mL (Cytometric Bead Array)

Recommended Dilutions:
It is recommended that this reagent should be titrated in each testing system to obtain optimal results.

Product Information

MP51323-1 targets JUN in immunoassays as a matched antibody pair. Validated in Cytometric bead array.

Capture antibody: JUN Monoclonal antibody, PBS Only (Capture) 66313-2-PBS (1E6A9). 100 µg. Concentration 1 mg/mL.

Detection antibody: JUN Monoclonal antibody, PBS Only (Detector) 60907-1-PBS (1F12E3). 100 µg. Concentration 1 mg/mL.

Unconjugated mouse monoclonal antibody pair in PBS only storage buffer at a concentration of 1 mg/mL, ready for conjugation.

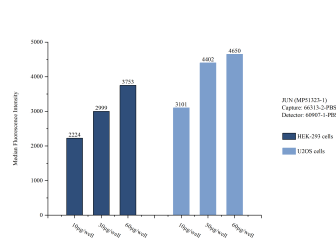
Matched antibody pairs are designed for use in a variety of assays and platforms that require matched antibody pairs.

Antibody use should be optimized for each application and assay.

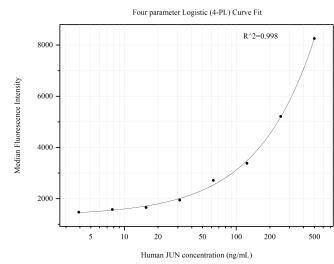
Storage

Storage:
Store at -80°C.
The product is shipped with ice packs. Upon receipt, store it immediately at -80°C
Storage buffer:
PBS only

Selected Validation Data



Sample test of MP51323-1, JUN Monoclonal Matched Antibody Pair, PBS Only. Capture antibody: 66313-2-PBS. Detection antibody: 60907-1-PBS.



Cytometric bead array standard curve of MP51323-1, JUN Monoclonal Matched Antibody Pair, PBS Only. Capture antibody: 66313-2-PBS. Detection antibody: 60907-1-PBS. Standard: Ag17419. Range: 3.906-500 ng/mL.