

# ADA Monoclonal Matched Antibody Pair, PBS Only

Catalog Number: **MP51321-3**

## Capture Antibody Information

Catalog Number: 67870-5-PBS	Clone ID: 1G7E2	Conjugate: Unconjugated
Host: Mouse	Reactivity: human	Full name: adenosine deaminase
Isotype: IgG1	GenBank: BC040226	Gene ID: 100
Purification Method: Protein G purification	Immunogen Catalog Number: Ag31326	

## Detection Antibody Information

Catalog Number: 67870-6-PBS	Clone ID: 2C1B5	Conjugate: Unconjugated
Host: Mouse	Reactivity: human	Full name: adenosine deaminase
Isotype: IgG1	GenBank: BC040226	Gene ID: 100
Purification Method: Protein G Magarose purification	Immunogen Catalog Number: Ag31326	

## Applications

Tested Applications: Cytometric bead array	Range: 12.5-200 ng/mL (Cytometric Bead Array)	Recommended Dilutions: It is recommended that this reagent should be titrated in each testing system to obtain optimal results.
---	--	--

## Product Information

MP51321-3 targets ADA in immunoassays as a matched antibody pair. Validated in Cytometric bead array.

Capture antibody: ADA Monoclonal antibody, PBS Only (Capture) 67870-5-PBS (1G7E2). 100 µg. Concentration 1 mg/mL.

Detection antibody: ADA Monoclonal antibody, PBS Only (Detector) 67870-6-PBS (2C1B5). 100 µg. Concentration 1 mg/mL.

Unconjugated mouse monoclonal antibody pair in PBS only storage buffer at a concentration of 1 mg/mL, ready for conjugation.

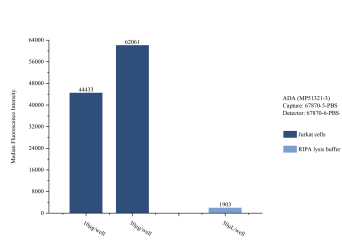
Matched antibody pairs are designed for use in a variety of assays and platforms that require matched antibody pairs.

Antibody use should be optimized for each application and assay.

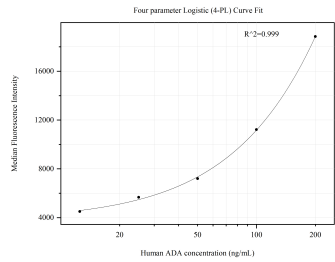
## Storage

Storage:  
Store at -80°C.  
**The product is shipped with ice packs. Upon receipt, store it immediately at -80°C**  
Storage buffer:  
PBS only

# Selected Validation Data



Sample test of MP51321-3, ADA Monoclonal Matched Antibody Pair, PBS Only. Capture antibody: 67870-5-PBS. Detection antibody: 67870-6-PBS.



Cytometric bead array standard curve of MP51321-3, ADA Monoclonal Matched Antibody Pair, PBS Only. Capture antibody: 67870-5-PBS. Detection antibody: 67870-6-PBS. Standard: Ag31326. Range: 12.5-200 ng/mL.