

CFLAR Monoclonal Matched Antibody Pair, PBS Only

Catalog Number: **MP51317-2**

Capture Antibody Information

Catalog Number:
60901-1-PBS
Host:
Mouse
Isotype:
IgG1
Purification Method:
Protein G purification

Clone ID:
3D12F5
Reactivity:
human
GenBank:
BC001602
Immunogen Catalog Number:
Ag31024

Conjugate:
Unconjugated
Full name:
CASP8 and FADD-like apoptosis regulator
Gene ID:
8837

Detection Antibody Information

Catalog Number:
60901-3-PBS
Host:
Mouse
Isotype:
IgG1
Purification Method:
Protein G Magarose purification

Clone ID:
2G4E7
Reactivity:
human
GenBank:
BC001602
Immunogen Catalog Number:
Ag31024

Conjugate:
Unconjugated
Full name:
CASP8 and FADD-like apoptosis regulator
Gene ID:
8837

Applications

Tested Applications:
Cytometric bead array

Range:
0.391-200 ng/mL (Cytometric Bead Array)

Recommended Dilutions:
It is recommended that this reagent should be titrated in each testing system to obtain optimal results.

Product Information

MP51317-2 targets CFLAR in immunoassays as a matched antibody pair. Validated in Cytometric bead array.

Capture antibody: CFLAR Monoclonal antibody, PBS Only (Capture) 60901-1-PBS (3D12F5). 100 µg. Concentration 1 mg/mL.

Detection antibody: CFLAR Monoclonal antibody, PBS Only (Detector) 60901-3-PBS (2G4E7). 100 µg. Concentration 1 mg/mL.

Unconjugated mouse monoclonal antibody pair in PBS only storage buffer at a concentration of 1 mg/mL, ready for conjugation.

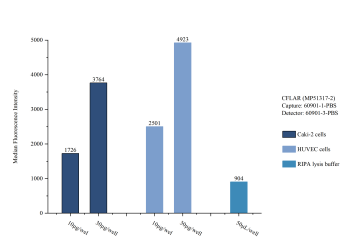
Matched antibody pairs are designed for use in a variety of assays and platforms that require matched antibody pairs.

Antibody use should be optimized for each application and assay.

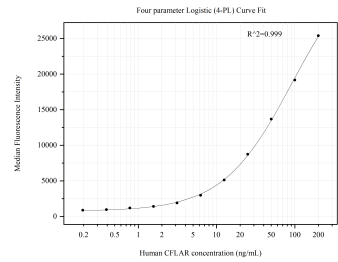
Storage

Storage:
Store at -80°C.
The product is shipped with ice packs. Upon receipt, store it immediately at -80°C
Storage buffer:
PBS only

Selected Validation Data



Sample test of MP51317-2, CFLAR Monoclonal Matched Antibody Pair, PBS Only. Capture antibody: 60901-1-PBS. Detection antibody: 60901-3-PBS.



Cytometric bead array standard curve of MP51317-2, CFLAR Monoclonal Matched Antibody Pair, PBS Only. Capture antibody: 60901-1-PBS. Detection antibody: 60901-3-PBS. Standard:Ag31024. Range: 0.391-200 ng/mL.