

SLC12A2 Monoclonal Matched Antibody Pair, PBS Only

Catalog Number: **MP51301-2**

Capture Antibody Information

Catalog Number: 60887-3-PBS	Clone ID: 2A11E2	Conjugate: Unconjugated
Host: Mouse	Reactivity: human	Full name: solute carrier family 12 (sodium/potassium/chloride transporters), member 2
Isotype: IgG1	GenBank: BC033003	Gene ID: 6558
Purification Method: Protein G Magarose purification	Immunogen Catalog Number: Ag27901	

Detection Antibody Information

Catalog Number: 60887-2-PBS	Clone ID: 2B8C4	Conjugate: Unconjugated
Host: Mouse	Reactivity: human	Full name: solute carrier family 12 (sodium/potassium/chloride transporters), member 2
Isotype: IgG1	GenBank: BC033003	Gene ID: 6558
Purification Method: Protein G Magarose purification	Immunogen Catalog Number: Ag27901	

Applications

Tested Applications: Cytometric bead array	Range: 0.391-50 ng/mL (Cytometric Bead Array)	Recommended Dilutions: It is recommended that this reagent should be titrated in each testing system to obtain optimal results.
--	---	---

Product Information

MP51301-2 targets SLC12A2 in immunoassays as a matched antibody pair. Validated in Cytometric bead array.

Capture antibody: NKCC1/SLC12A2 Monoclonal antibody, PBS Only (Capture) 60887-3-PBS (2A11E2). 100 μ g. Concentration 1 mg/mL.

Detection antibody: NKCC1/SLC12A2 Monoclonal antibody, PBS Only (Detector) 60887-2-PBS (2B8C4). 100 μ g. Concentration 1 mg/mL.

Unconjugated mouse monoclonal antibody pair in PBS only storage buffer at a concentration of 1 mg/mL, ready for conjugation.

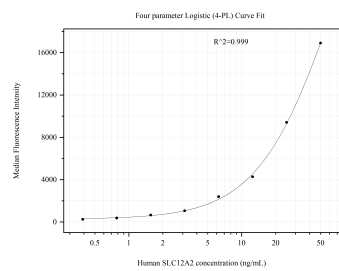
Matched antibody pairs are designed for use in a variety of assays and platforms that require matched antibody pairs.

Antibody use should be optimized for each application and assay.

Storage

Storage:
Store at -80°C.
The product is shipped with ice packs. Upon receipt, store it immediately at -80°C
Storage buffer:
PBS only

Selected Validation Data



Cytometric bead array standard curve of MP51301-2, SLC12A2 Monoclonal Matched Antibody Pair, PBS Only. Capture antibody: 60887-3-PBS. Detection antibody: 60887-2-PBS. Standard:Ag27901. Range: 0.391-50 ng/mL