

For Research Use Only

WBP2NL Monoclonal Matched Antibody Pair, PBS Only



Catalog Number:MP51240-3

Capture Antibody Information

Catalog Number: 60839-5-PBS	Clone ID: 2D12F2	Conjugate: Unconjugated
Host: Mouse	Reactivity: human	Full name: WBP2 N-terminal like
Isotype: IgG1	GenBank: BC022546	Gene ID: 164684
Purification Method: Protein G Magarose purification	Immunogen Catalog Number: Ag18347	

Detection Antibody Information

Catalog Number: 60839-6-PBS	Clone ID: 1C7H5	Conjugate: Unconjugated
Host: Mouse	Reactivity: human	Full name: WBP2 N-terminal like
Isotype: IgG1	GenBank: BC022546	Gene ID: 164684
Purification Method: Protein G Magarose purification	Immunogen Catalog Number: Ag18347	

Applications

Tested Applications: Cytometric bead array	Range: 0.391-100 ng/mL (Cytometric Bead Array)	Recommended Dilutions: It is recommended that this reagent should be titrated in each testing system to obtain optimal results.
--	--	---

Product Information

MP51240-3 targets WBP2NL in immunoassays as a matched antibody pair. Validated in Cytometric bead array.

Capture antibody: WBP2NL Monoclonal antibody, PBS Only (Capture) 60839-5-PBS (2D12F2). 100 μ g. Concentration 1 mg/mL.

Detection antibody: WBP2NL Monoclonal antibody, PBS Only (Detector) 60839-6-PBS (1C7H5). 100 μ g. Concentration 1 mg/mL.

Unconjugated mouse monoclonal antibody pair in PBS only storage buffer at a concentration of 1 mg/mL, ready for conjugation.

Matched antibody pairs are designed for use in a variety of assays and platforms that require matched antibody pairs.

Antibody use should be optimized for each application and assay.

Storage

Storage:
Store at -80°C.
The product is shipped with ice packs. Upon receipt, store it immediately at -80°C

Storage buffer:
PBS only

For technical support and original validation data for this product please contact:

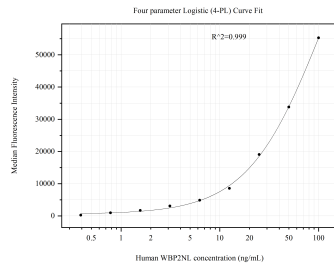
T: 4006900926

E: Proteintech-CN@ptglab.com

W: ptgcn.com

This product is exclusively available under Proteintech Group brand and is not available to purchase from any other manufacturer.

Selected Validation Data



Cytometric bead array standard curve of MP51240-3, WBP2NL Monoclonal Matched Antibody Pair, PBS Only. Capture antibody: 60839-5-PBS. Detection antibody: 60839-6-PBS. Standard:Ag18347. Range: 0.391-100 ng/mL.