

# Cardiac Troponin I Monoclonal Matched Antibody Pair, PBS Only

Catalog Number: **MP51198-1**

## Capture Antibody Information

<b>Catalog Number:</b>	<b>Clone ID:</b>	<b>Conjugate:</b>
66376-2-PBS	1C5E8	Unconjugated
<b>Host:</b>	<b>Reactivity:</b>	<b>Full name:</b>
Mouse	human	troponin I type 3 (cardiac)
<b>Isotype:</b>	<b>GenBank:</b>	<b>Gene ID:</b>
IgG2b	BC096165	7137
<b>Purification Method:</b>	<b>Immunogen Catalog Number:</b>	
Protein A purification	Ag16758	

## Detection Antibody Information

<b>Catalog Number:</b>	<b>Clone ID:</b>	<b>Conjugate:</b>
66376-1-PBS	1D5D6	Unconjugated
<b>Host:</b>	<b>Reactivity:</b>	<b>Full name:</b>
Mouse	human, mouse, rat, pig, rabbit	troponin I type 3 (cardiac)
<b>Isotype:</b>	<b>GenBank:</b>	<b>Gene ID:</b>
IgG1	BC096165	7137
<b>Purification Method:</b>	<b>Immunogen Catalog Number:</b>	
Protein G purification	Ag16758	

## Applications

<b>Tested Applications:</b>	<b>Range:</b>	<b>Recommended Dilutions:</b>
Cytometric bead array, Sandwich ELISA	12.5-400 ng/mL (Cytometric Bead Array) 0.156-10 ng/mL (Sandwich ELISA)	It is recommended that this reagent should be titrated in each testing system to obtain optimal results.

## Product Information

MP51198-1 targets Cardiac Troponin I in immunoassays as a matched antibody pair. Validated in Cytometric bead array, Sandwich ELISA.

Capture antibody: Cardiac Troponin I Monoclonal antibody, PBS Only (Capture) 66376-2-PBS (1C5E8). 100 µg. Concentration 1 mg/mL.

Detection antibody: Cardiac Troponin I Monoclonal antibody, PBS Only (Detector) 66376-1-PBS (1D5D6). 100 µg. Concentration 1 mg/mL.

Unconjugated mouse monoclonal antibody pair in PBS only storage buffer at a concentration of 1 mg/mL, ready for conjugation.

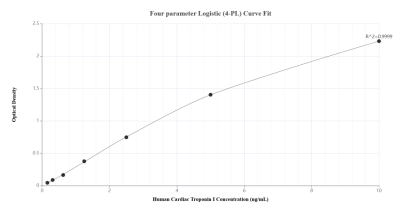
Matched antibody pairs are designed for use in a variety of assays and platforms that require matched antibody pairs.

Antibody use should be optimized for each application and assay.

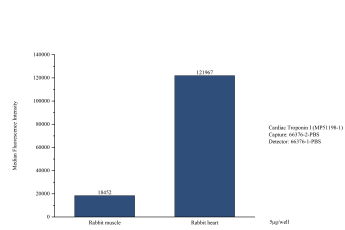
## Storage

**Storage:**  
Store at -80°C.  
The product is shipped with ice packs. Upon receipt, store it immediately at -80°C  
**Storage buffer:**  
PBS only

Selected Validation Data



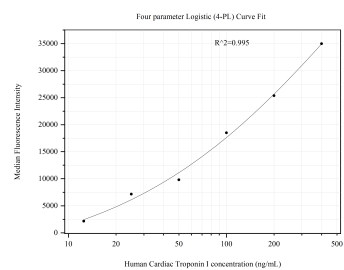
Sandwich ELISA standard curve of MP51198-1, Human Cardiac Troponin I Monoclonal Matched Antibody Pair - PBS only. 66376-2-PBS was coated to a plate as the capture antibody and incubated with serial dilutions of standard Ag16758. 66376-1-PBS was HRP conjugated as the detection antibody. Range: 0.156-10 ng/mL.



Cytometric bead array in cell lysate using MP51198-1, Cardiac Troponin I Monoclonal Matched Antibody Pair, PBS Only. Capture antibody: 66376-2-PBS. Detection antibody: 66376-1-PBS. Cell lysate: Rabbit muscle, Rabbit heart.



The mean Cardiac Troponin I concentration was determined to be 220.78 ng/mL in mouse heart tissue extract based on a 7.10 mg/mL extract load.



Cytometric bead array standard curve of MP51198-1, Cardiac Troponin I Monoclonal Matched Antibody Pair, PBS Only. Capture antibody: 66376-2-PBS. Detection antibody: 66376-1-PBS. Standard:Ag16758. Range: 12.5-400 ng/mL.