

SFTP A1 Monoclonal Matched Antibody Pair, PBS Only

Catalog Number: **MP51129-1**

Capture Antibody Information

Catalog Number:	Clone ID:	Conjugate:
60789-1-PBS	1H3C12	Unconjugated
Host:	Reactivity:	Full name:
Mouse	human	surfactant protein A1
Isotype:	GenBank:	Gene ID:
IgG2b	BC026229	653509
Purification Method:	Immunogen Catalog Number:	
Protein A purification	Ag23599	

Detection Antibody Information

Catalog Number:	Clone ID:	Conjugate:
60789-2-PBS	1A7D9	Unconjugated
Host:	Reactivity:	Full name:
Mouse	human	surfactant protein A1
Isotype:	GenBank:	Gene ID:
IgG2a	BC026229	653509
Purification Method:	Immunogen Catalog Number:	
Protein A purification	Ag33136	

Applications

Tested Applications:	Range:	Recommended Dilutions:
Cytometric bead array, Sandwich ELISA	0.781-100 ng/mL (Cytometric Bead Array) 0.313-20 ng/mL (Sandwich ELISA)	It is recommended that this reagent should be titrated in each testing system to obtain optimal results.

Product Information

MP51129-1 targets SFTP A1 in immunoassays as a matched antibody pair. Validated in Cytometric bead array, Sandwich ELISA.

Capture antibody: Surfactant Protein A Monoclonal antibody, PBS Only (Capture) 60789-1-PBS (1H3C12). 100 µg. Concentration 1 mg/mL.

Detection antibody: Surfactant Protein A Monoclonal antibody, PBS Only (Detector) 60789-2-PBS (1A7D9). 100 µg. Concentration 1 mg/mL.

Unconjugated mouse monoclonal antibody pair in PBS only storage buffer at a concentration of 1 mg/mL, ready for conjugation.

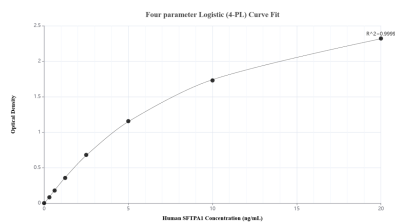
Matched antibody pairs are designed for use in a variety of assays and platforms that require matched antibody pairs.

Antibody use should be optimized for each application and assay.

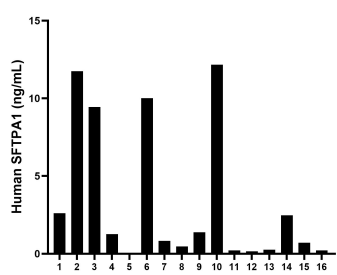
Storage

Storage:
Store at -80°C.
The product is shipped with ice packs. Upon receipt, store it immediately at -80°C
Storage buffer:
PBS only

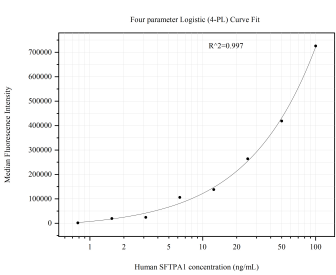
Selected Validation Data



Sandwich ELISA standard curve of MP51129-1, Human SFTPA1 Monoclonal Matched Antibody Pair - PBS only. 60789-1-PBS was coated to a plate as the capture antibody and incubated with serial dilutions of standard Ag23599. 60789-2-PBS was HRP conjugated as the detection antibody. Range: 0.313-20 ng/mL



Serum of sixteen individual healthy human donors was measured. The SFTPA1 concentration of detected samples was determined to be 3.37 ng/mL with a range of 0.05-12.17 ng/mL



Cytometric bead array standard curve of MP51129-1, SFTPA1 Monoclonal Matched Antibody Pair, PBS Only. Capture antibody: 60789-1-PBS. Detection antibody: 60789-2-PBS. Standard: Ag23599. Range: 0.781-100 ng/mL