

CD180 Monoclonal Matched Antibody Pair, PBS Only

Catalog Number: **MP51097-1**

Capture Antibody Information

Catalog Number: 60768-1-PBS	Clone ID: 3B1E8	Conjugate: Unconjugated
Host: Mouse	Reactivity: human	Full name: CD180 molecule
Isotype: IgG1	GenBank: BC109069	Gene ID: 4064
Purification Method: Protein G Magarose purification	Immunogen Catalog Number: Ag28488	

Detection Antibody Information

Catalog Number: 60768-2-PBS	Clone ID: 1D11C10	Conjugate: Unconjugated
Host: Mouse	Reactivity: human	Full name: CD180 molecule
Isotype: IgG1	GenBank: BC109069	Gene ID: 4064
Purification Method: Protein G purification	Immunogen Catalog Number: Ag28488	

Applications

Tested Applications: Cytometric bead array, Sandwich ELISA	Range: 0.391-100 ng/mL (Cytometric Bead Array) 39.1-2500 pg/mL (Sandwich ELISA)	Recommended Dilutions: It is recommended that this reagent should be titrated in each testing system to obtain optimal results.
---	---	--

Product Information

MP51097-1 targets CD180 in immunoassays as a matched antibody pair. Validated in Cytometric bead array, Sandwich ELISA.

Capture antibody: CD180 Monoclonal antibody, PBS Only (Capture) 60768-1-PBS (3B1E8). 100 µg. Concentration 1 mg/mL.

Detection antibody: CD180 Monoclonal antibody, PBS Only (Detector) 60768-2-PBS (1D11C10). 100 µg. Concentration 1 mg/mL.

Unconjugated mouse monoclonal antibody pair in PBS only storage buffer at a concentration of 1 mg/mL, ready for conjugation.

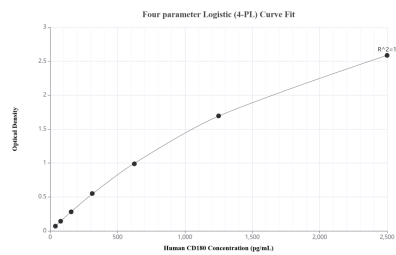
Matched antibody pairs are designed for use in a variety of assays and platforms that require matched antibody pairs.

Antibody use should be optimized for each application and assay.

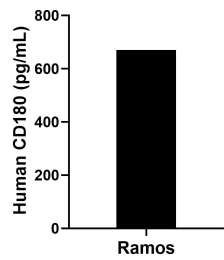
Storage

Storage:
Store at -80°C.
The product is shipped with ice packs. Upon receipt, store it immediately at -80°C
Storage buffer:
PBS only

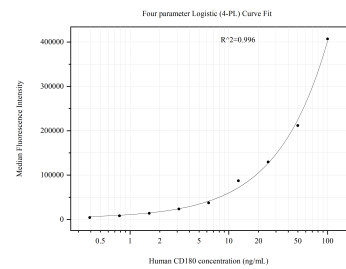
Selected Validation Data



Sandwich ELISA standard curve of MP51097-1, Human CD180 Monoclonal Matched Antibody Pair - PBS only. 60768-1-PBS was coated to a plate as the capture antibody and incubated with serial dilutions of standard Ag28488. 60768-2-PBS was HRP conjugated as the detection antibody. Range: 39.1-2500 pg/mL



The mean CD180 concentration was determined to be 670.7 pg/mL in Ramos cell extract based on a 1.4 mg/mL extract load.



Cytometric bead array standard curve of MP51097-1, CD180 Monoclonal Matched Antibody Pair, PBS Only. Capture antibody: 60768-1-PBS. Detection antibody: 60768-2-PBS. Standard: Ag28488. Range: 0.391-100 ng/mL