

CA15-3,MUC1 Monoclonal Matched Antibody Pair, PBS Only

Catalog Number:MP51087-2

Capture Antibody Information

Catalog Number:
60749-3-PBS
Host:
Mouse
Isotype:
IgG1
Purification Method:
Protein G purification

Clone ID:
2F7A6
Reactivity:
human
GenBank:
BC120975
Immunogen Catalog Number:
Ag17660

Conjugate:
Unconjugated
Full name:
mucin 1, cell surface associated
Gene ID:
4582

Detection Antibody Information

Catalog Number:
60749-5-PBS
Host:
Mouse
Isotype:
IgG1
Purification Method:
Protein G Magarose purification

Clone ID:
3H10A3
Reactivity:
human
GenBank:
BC120975
Immunogen Catalog Number:
Ag17660

Conjugate:
Unconjugated
Full name:
mucin 1, cell surface associated
Gene ID:
4582

Applications

Tested Applications:
Cytometric bead array, Sandwich
ELISA

Range:
0.391-100 ng/mL (Cytometric Bead
Array)
0.78-50 ng/mL (Sandwich ELISA)

Recommended Dilutions:
It is recommended that this reagent
should be titrated in each testing
system to obtain optimal results.

Product Information

MP51087-2 targets CA15-3,MUC1 in immunoassays as a matched antibody pair. Validated in Cytometric bead array, Sandwich ELISA.

Capture antibody: CA15-3,MUC1 Monoclonal antibody, PBS Only (Capture) 60749-3-PBS (2F7A6). 100 µg.
Concentration 1 mg/mL.

Detection antibody: CA15-3,MUC1 Monoclonal antibody, PBS Only (Detector) 60749-5-PBS (3H10A3). 100 µg.
Concentration 1 mg/mL.

Unconjugated mouse monoclonal antibody pair in PBS only storage buffer at a concentration of 1 mg/mL, ready for conjugation.

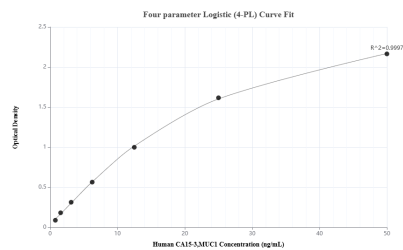
Matched antibody pairs are designed for use in a variety of assays and platforms that require matched antibody pairs.

Antibody use should be optimized for each application and assay.

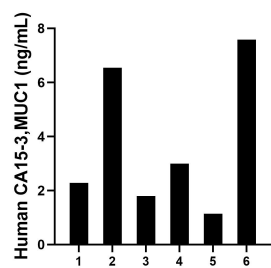
Storage

Storage:
Store at -80°C.
The product is shipped with ice packs. Upon receipt, store it immediately at -80°C
Storage buffer:
PBS only

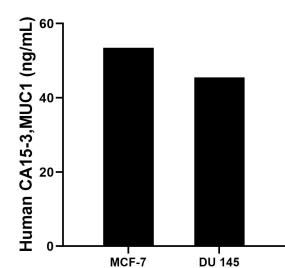
Selected Validation Data



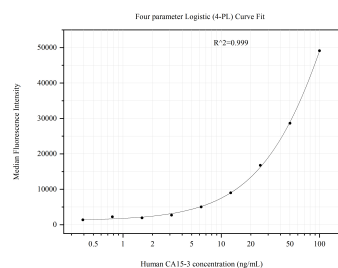
Sandwich ELISA standard curve of MP51087-2, Human CA15-3,MUC1 Monoclonal Matched Antibody Pair - PBS only. 60749-3-PBS was coated to a plate as the capture antibody and incubated with serial dilutions of standard Ag17660. 60749-5-PBS was HRP conjugated as the detection antibody. Range: 0.78-50 ng/mL



Serum of six individual healthy human donors was measured. The human CA15-3,MUC1 concentration of detected samples was determined to be 3.72 ng/mL with a range of 1.14-7.58 ng/mL



The mean CA15-3,MUC1 concentration was determined to be 53.46 ng/mL in MCF-7 cell extract based on a 1.3 mg/mL extract load and 45.49 ng/mL in DU 145 cell extract based on a 2.0 mg/mL extract load.



Cytometric bead array standard curve of MP51087-2, CA15-3,MUC1 Monoclonal Matched Antibody Pair, PBS Only. Capture antibody: 60749-3-PBS. Detection antibody: 60749-5-PBS. Standard:Ag17660. Range: 0.391-100 ng/mL