

NGFR/TNFRSF16 Monoclonal Matched Antibody Pair, PBS Only

Catalog Number: **MP51068-2**

Capture Antibody Information

Catalog Number:
60739-1-PBS
Host:
Mouse
Isotype:
IgG2b
Purification Method:
Protein A purification

Clone ID:
1G10A6
Reactivity:
human
GenBank:
NM_002507
Immunogen Catalog Number:
Ag29849

Conjugate:
Unconjugated
Full name:
nerve growth factor receptor (TNFR
superfamily, member 16)
Gene ID:
4804

Detection Antibody Information

Catalog Number:
60739-3-PBS
Host:
Mouse
Isotype:
IgG1
Purification Method:
Protein G purification

Clone ID:
2F8G4
Reactivity:
human
GenBank:
NM_002507
Immunogen Catalog Number:
Ag29849

Conjugate:
Unconjugated
Full name:
nerve growth factor receptor (TNFR
superfamily, member 16)
Gene ID:
4804

Applications

Tested Applications:
Cytometric bead array, Sandwich
ELISA

Range:
1.563-50 ng/mL (Cytometric Bead
Array)
1.56-100 ng/mL (Sandwich ELISA)

Recommended Dilutions:
It is recommended that this reagent
should be titrated in each testing
system to obtain optimal results.

Product Information

MP51068-2 targets NGFR/TNFRSF16 in immunoassays as a matched antibody pair. Validated in Cytometric bead array, Sandwich ELISA.

Capture antibody: NGFR/TNFRSF16 Monoclonal antibody, PBS Only (Capture) 60739-1-PBS (1G10A6). 100 µg. Concentration 1 mg/mL.

Detection antibody: NGFR/TNFRSF16 Monoclonal antibody, PBS Only (Detector) 60739-3-PBS (2F8G4). 100 µg. Concentration 1 mg/mL.

Unconjugated mouse monoclonal antibody pair in PBS only storage buffer at a concentration of 1 mg/mL, ready for conjugation.

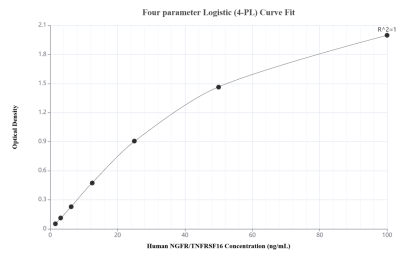
Matched antibody pairs are designed for use in a variety of assays and platforms that require matched antibody pairs.

Antibody use should be optimized for each application and assay.

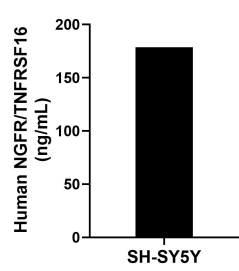
Storage

Storage:
Store at -80°C.
The product is shipped with ice packs. Upon receipt, store it immediately at -80°C
Storage buffer:
PBS only

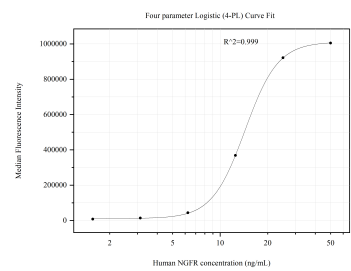
Selected Validation Data



Sandwich ELISA standard curve of MP51068-2, Human NGFR/TNFRSF16 Monoclonal Matched Antibody Pair - PBS only. 60739-1-PBS was coated to a plate as the capture antibody and incubated with serial dilutions of standard Ag29849. 60739-3-PBS was HRP conjugated as the detection antibody. Range: 1.56-100 ng/mL



The mean NGFR/TNFRSF16 concentration was determined to be 178.67 ng/mL in SH-SY5Y cell extract based on a 3.20 mg/mL extract load.



Cytometric bead array standard curve of MP51068-2, p75NTR Monoclonal Matched Antibody Pair, PBS Only. Capture antibody: 60739-1-PBS. Detection antibody: 60739-3-PBS. Standard: Ag29849. Range: 1.563-50 ng/mL