

MMP-9 Monoclonal Matched Antibody Pair, PBS Only

Catalog Number: **MP51000-1**

Capture Antibody Information

Catalog Number:
60600-1-PBS
Host:
Mouse
Isotype:
IgG1
Purification Method:
Protein G purification

Clone ID:
3C3E2
Reactivity:
human
GenBank:
BC006093

Conjugate:
Unconjugated
Full name:
matrix metalloproteinase 9
(gelatinase B, 92kDa gelatinase,
92kDa type IV collagenase)
Gene ID:
4318

Detection Antibody Information

Catalog Number:
60600-2-PBS
Host:
Mouse
Isotype:
IgG1
Purification Method:
Protein G purification

Clone ID:
1E5G7
Reactivity:
human
GenBank:
BC006093

Conjugate:
Unconjugated
Full name:
matrix metalloproteinase 9
(gelatinase B, 92kDa gelatinase,
92kDa type IV collagenase)
Gene ID:
4318

Applications

Tested Applications:
Cytometric bead array

Range:
Physical level (Cytometric Bead Array)

Recommended Dilutions:
It is recommended that this reagent should be titrated in each testing system to obtain optimal results.

Product Information

MP51000-1 targets MMP-9 in immunoassays as a matched antibody pair. Validated in Cytometric bead array.

Capture antibody: MMP-9 Monoclonal antibody, PBS Only (Capture) 60600-1-PBS (3C3E2). 100 µg. Concentration 1 mg/mL.

Detection antibody: MMP-9 Monoclonal antibody, PBS Only (Detector) 60600-2-PBS (1E5G7). 100 µg. Concentration 1 mg/mL.

Unconjugated mouse monoclonal antibody pair in PBS only storage buffer at a concentration of 1 mg/mL, ready for conjugation.

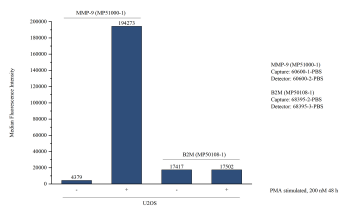
Matched antibody pairs are designed for use in a variety of assays and platforms that require matched antibody pairs.

Antibody use should be optimized for each application and assay.

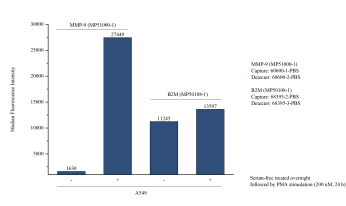
Storage

Storage:
Store at -80°C.
The product is shipped with ice packs. Upon receipt, store it immediately at -80°C
Storage buffer:
PBS only

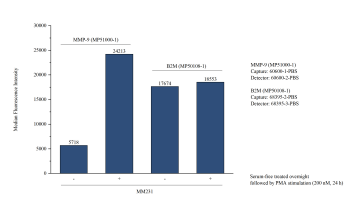
Selected Validation Data



Cytometric bead array of U2OS cells supernatant using MP51000-1, MMP-9 Monoclonal Matched Antibody Pair, PBS Only. Capture antibody: 60600-1-PBS. Detection antibody: 60600-2-PBS. U2OS cells were cultured for 2 days in normal culture media or PMA (200nM, 48h) containing media. 50 μ L of the supernatant was analyzed using MP51000-1 (MMP-9 Monoclonal Matched Antibody Pair). Non-related target B2M Monoclonal Matched Antibody Pair (MP50108-1) was served as



Cytometric bead array of A549 cells supernatant using MP51000-1, MMP-9 Monoclonal Matched Antibody Pair, PBS Only. Capture antibody: 60600-1-PBS. Detection antibody: 60600-2-PBS. A549 cells were cultured in serum-free media overnight followed by PMA stimulation (200 nM, 24 h). 50 μ L of the supernatant was analyzed using MP51000-1 (MMP-9 Monoclonal Matched Antibody Pair). Non-related target B2M Monoclonal Matched Antibody Pair (MP50108-1) was served as



Cytometric bead array of MM231 cells supernatant using MP51000-1, MMP-9 Monoclonal Matched Antibody Pair, PBS Only. Capture antibody: 60600-1-PBS. Detection antibody: 60600-2-PBS. MM231 cells were cultured in serum-free media overnight followed by PMA stimulation (200 nM, 24 h). 50 μ L of the supernatant was analyzed using MP51000-1 (MMP-9 Monoclonal Matched Antibody Pair). Non-related target B2M Monoclonal Matched Antibody Pair (MP50108-1) was served as