

Calnexin Monoclonal Matched Antibody Pair, PBS Only

Catalog Number: **MP50746-2**

Capture Antibody Information

Catalog Number:
66903-2-PBS
Host:
Mouse
Isotype:
IgG2a
Purification Method:
Protein A purification

Clone ID:
1G11C1
Reactivity:
human
GenBank:
BC003552
Immunogen Catalog Number:
Ag25535

Conjugate:
Unconjugated
Full name:
calnexin
Gene ID:
821

Detection Antibody Information

Catalog Number:
66903-4-PBS
Host:
Mouse
Isotype:
IgG1
Purification Method:
Protein G purification

Clone ID:
1G4D9
Reactivity:
human
GenBank:
BC003552
Immunogen Catalog Number:
Ag25535

Conjugate:
Unconjugated
Full name:
calnexin
Gene ID:
821

Applications

Tested Applications:
Cytometric bead array

Range:
1.563-200 ng/mL (Cytometric Bead Array)

Recommended Dilutions:
It is recommended that this reagent should be titrated in each testing system to obtain optimal results.

Product Information

MP50746-2 targets Calnexin in immunoassays as a matched antibody pair. Validated in Cytometric bead array.

Capture antibody: Calnexin Monoclonal antibody, PBS Only (Capture) 66903-2-PBS (1G11C1). 100 µg. Concentration 1 mg/mL.

Detection antibody: Calnexin Monoclonal antibody, PBS Only (Detector) 66903-4-PBS (1G4D9). 100 µg. Concentration 1 mg/mL.

Unconjugated mouse monoclonal antibody pair in PBS only storage buffer at a concentration of 1 mg/mL, ready for conjugation.

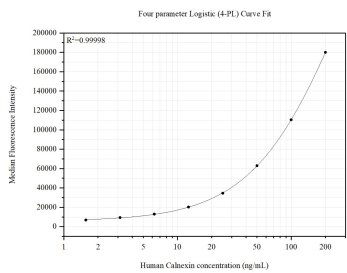
Matched antibody pairs are designed for use in a variety of assays and platforms that require matched antibody pairs.

Antibody use should be optimized for each application and assay.

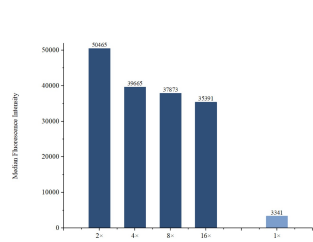
Storage

Storage:
Store at -80°C.
The product is shipped with ice packs. Upon receipt, store it immediately at -80°C
Storage buffer:
PBS only

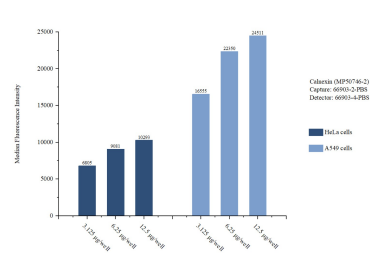
Selected Validation Data



Cytometric bead array standard curve of MP50746-2, Calnexin Monoclonal Matched Antibody Pair, PBS Only. Capture antibody: 66903-2-PBS. Detection antibody: 66903-4-PBS. Standard:Ag25535. Range: 1.563-200 ng/mL.



Cytometric bead array sample test of MP50746-2, Calnexin Monoclonal Matched Antibody Pair, PBS Only. Capture antibody: 66903-2-PBS. Detection antibody: 66903-4-PBS.



Cytometric bead array sample test of MP50746-2, Calnexin Monoclonal Matched Antibody Pair, PBS Only. Capture antibody: 66903-2-PBS. Detection antibody: 66903-4-PBS.