

# PARL Monoclonal Matched Antibody Pair, PBS Only

Catalog Number: **MP50588-2**

## Capture Antibody Information

**Catalog Number:**  
68366-3-PBS

**Host:**  
Mouse

**Isotype:**  
IgG1

**Purification Method:**  
Protein G Magarose purification

**Clone ID:**  
1G10F9

**Reactivity:**  
human

**GenBank:**  
BC014058

**Immunogen Catalog Number:**  
Ag24789

**Conjugate:**  
Unconjugated

**Full name:**  
presenilin associated, rhomboid-like

**Gene ID:**  
55486

## Detection Antibody Information

**Catalog Number:**  
68366-2-PBS

**Host:**  
Mouse

**Isotype:**  
IgG1

**Purification Method:**  
Protein G Magarose purification

**Clone ID:**  
3A7G1

**Reactivity:**  
human

**GenBank:**  
BC014058

**Immunogen Catalog Number:**  
Ag24789

**Conjugate:**  
Unconjugated

**Full name:**  
presenilin associated, rhomboid-like

**Gene ID:**  
55486

## Applications

**Tested Applications:**  
Cytometric bead array, Sandwich ELISA

**Range:**  
0.195-100 ng/mL (Cytometric Bead Array)  
0.78-50 ng/mL (Sandwich ELISA)

**Recommended Dilutions:**  
It is recommended that this reagent should be titrated in each testing system to obtain optimal results.

## Product Information

MP50588-2 targets PARL in immunoassays as a matched antibody pair. Validated in Cytometric bead array, Sandwich ELISA.

Capture antibody: PARL Monoclonal antibody, PBS Only (Capture) 68366-3-PBS (1G10F9). 100 µg. Concentration 1 mg/mL.

Detection antibody: PARL Monoclonal antibody, PBS Only (Detector) 68366-2-PBS (3A7G1). 100 µg. Concentration 1 mg/mL.

Unconjugated mouse monoclonal antibody pair in PBS only storage buffer at a concentration of 1 mg/mL, ready for conjugation.

Matched antibody pairs are designed for use in a variety of assays and platforms that require matched antibody pairs.

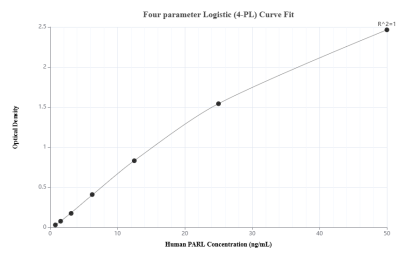
Antibody use should be optimized for each application and assay.

## Storage

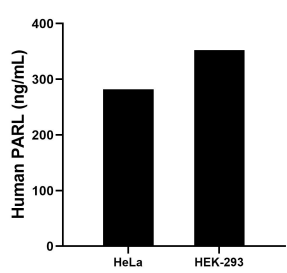
**Storage:**  
Store at -80°C.  
**The product is shipped with ice packs. Upon receipt, store it immediately at -80°C**

**Storage buffer:**  
PBS only

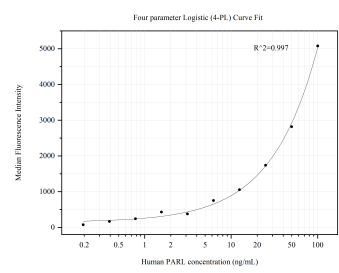
## Selected Validation Data



Sandwich ELISA standard curve of MP50588-2, Human PARL Monoclonal Matched Antibody Pair - PBS only. 68366-3-PBS was coated to a plate as the capture antibody and incubated with serial dilutions of standard Ag24789. 68366-2-PBS was HRP conjugated as the detection antibody. Range: 0.78-50 ng/mL



The mean PARL concentration was determined to be 282.18 ng/mL in HeLa cell extract based on a 1.8 mg/mL extract load and 352.24 ng/mL in HEK-293 cell extract based on a 2.2 mg/mL extract load.



Cytometric bead array standard curve of MP50588-2, PARL Monoclonal Matched Antibody Pair, PBS Only. Capture antibody: 68366-3-PBS. Detection antibody: 68366-2-PBS. Standard: Ag24789. Range: 0.195-100 ng/mL