

ALDH18A1 Monoclonal Matched Antibody Pair, PBS Only

Catalog Number: **MP50575-1**

Capture Antibody Information

Catalog Number:
68184-2-PBS
Host:
Mouse
Isotype:
IgG2a
Purification Method:
Protein A purification

Clone ID:
1A9D8
Reactivity:
human
GenBank:
BC106054
Immunogen Catalog Number:
Ag12100

Conjugate:
Unconjugated
Full name:
aldehyde dehydrogenase 18 family, member A1
Gene ID:
5832

Detection Antibody Information

Catalog Number:
68184-3-PBS
Host:
Mouse
Isotype:
IgG1
Purification Method:
Protein G purification

Clone ID:
2B1D9
Reactivity:
human
GenBank:
BC106054
Immunogen Catalog Number:
Ag12100

Conjugate:
Unconjugated
Full name:
aldehyde dehydrogenase 18 family, member A1
Gene ID:
5832

Applications

Tested Applications:
Cytometric bead array

Range:
0.195-200 ng/mL (Cytometric Bead Array)

Recommended Dilutions:
It is recommended that this reagent should be titrated in each testing system to obtain optimal results.

Product Information

MP50575-1 targets ALDH18A1 in immunoassays as a matched antibody pair. Validated in Cytometric bead array.

Capture antibody: P5CS Monoclonal antibody, PBS Only (Capture) 68184-2-PBS (1A9D8). 100 μ g. Concentration 1 mg/mL.

Detection antibody: P5CS Monoclonal antibody, PBS Only (Detector) 68184-3-PBS (2B1D9). 100 μ g. Concentration 1 mg/mL.

Unconjugated mouse monoclonal antibody pair in PBS only storage buffer at a concentration of 1 mg/mL, ready for conjugation.

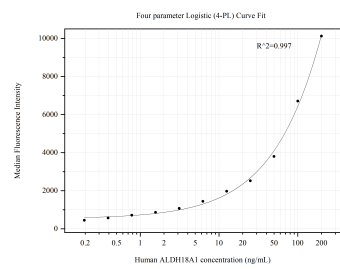
Matched antibody pairs are designed for use in a variety of assays and platforms that require matched antibody pairs.

Antibody use should be optimized for each application and assay.

Storage

Storage:
Store at -80°C.
The product is shipped with ice packs. Upon receipt, store it immediately at -80°C
Storage buffer:
PBS only

Selected Validation Data



Cytometric bead array standard curve of MP50575-1, ALDH18A1 Monoclonal Matched Antibody Pair, PBS Only. Capture antibody: 68184-2-PBS. Detection antibody: 68184-3-PBS. Standard:Ag12100. Range: 0.195-200 ng/mL