

LRPPRC Monoclonal Matched Antibody Pair, PBS Only

Catalog Number: **MP50550-2**

Capture Antibody Information

Catalog Number:
67679-4-PBS
Host:
Mouse
Isotype:
IgG1
Purification Method:
Protein G purification

Clone ID:
3C7F2
Reactivity:
human
GenBank:
BC050311
Immunogen Catalog Number:
Ag30261

Conjugate:
Unconjugated
Full name:
leucine-rich PPR-motif containing
Gene ID:
10128

Detection Antibody Information

Catalog Number:
67679-2-PBS
Host:
Mouse
Isotype:
IgG1
Purification Method:
Protein G Magarose purification

Clone ID:
3C8G4
Reactivity:
human
GenBank:
BC050311
Immunogen Catalog Number:
Ag30261

Conjugate:
Unconjugated
Full name:
leucine-rich PPR-motif containing
Gene ID:
10128

Applications

Tested Applications:
Cytometric bead array

Range:
0.781-100 ng/mL (Cytometric Bead Array)

Recommended Dilutions:
It is recommended that this reagent should be titrated in each testing system to obtain optimal results.

Product Information

MP50550-2 targets LRPPRC in immunoassays as a matched antibody pair. Validated in Cytometric bead array.

Capture antibody: LRPPRC Monoclonal antibody, PBS Only (Capture) 67679-4-PBS (3C7F2). 100 µg. Concentration 1 mg/mL.

Detection antibody: LRPPRC Monoclonal antibody, PBS Only (Capture/Detector) 67679-2-PBS (3C8G4). 100 µg. Concentration 1 mg/mL.

Unconjugated mouse monoclonal antibody pair in PBS only storage buffer at a concentration of 1 mg/mL, ready for conjugation.

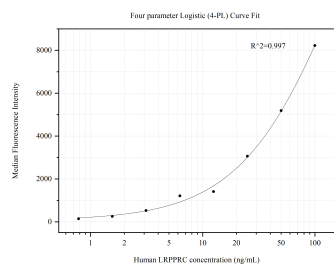
Matched antibody pairs are designed for use in a variety of assays and platforms that require matched antibody pairs.

Antibody use should be optimized for each application and assay.

Storage

Storage:
Store at -80°C.
The product is shipped with ice packs. Upon receipt, store it immediately at -80°C
Storage buffer:
PBS only

Selected Validation Data



Cytometric bead array standard curve of MP50550-2, LRPPRC Monoclonal Matched Antibody Pair, PBS Only. Capture antibody: 67679-4-PBS. Detection antibody: 67679-2-PBS. Standard:Ag30261. Range: 0.781-100 ng/mL.