

# SOD2 Monoclonal Matched Antibody Pair, PBS Only

Catalog Number: **MP50535-2**

## Capture Antibody Information

**Catalog Number:**  
66474-2-PBS  
**Host:**  
Mouse  
**Isotype:**  
IgG1  
**Purification Method:**  
Protein G purification

**Clone ID:**  
2B3B7  
**Reactivity:**  
human  
**GenBank:**  
BC016934  
**Immunogen Catalog Number:**  
Ag21388

**Conjugate:**  
Unconjugated  
**Full name:**  
superoxide dismutase 2, mitochondrial  
**Gene ID:**  
6648

## Detection Antibody Information

**Catalog Number:**  
66474-4-PBS  
**Host:**  
Mouse  
**Isotype:**  
IgG1  
**Purification Method:**  
Protein G purification

**Clone ID:**  
1G6D8  
**Reactivity:**  
human  
**GenBank:**  
BC016934  
**Immunogen Catalog Number:**  
Ag21388

**Conjugate:**  
Unconjugated  
**Full name:**  
superoxide dismutase 2, mitochondrial  
**Gene ID:**  
6648

## Applications

**Tested Applications:**  
Cytometric bead array, Sandwich ELISA

**Range:**  
3.125-100 ng/mL (Cytometric Bead Array)  
0.781-50 ng/mL (Sandwich ELISA)

**Recommended Dilutions:**  
It is recommended that this reagent should be titrated in each testing system to obtain optimal results.

## Product Information

MP50535-2 targets SOD2 in immunoassays as a matched antibody pair. Validated in Cytometric bead array, Sandwich ELISA.

Capture antibody: SOD2 Monoclonal antibody, PBS Only (Capture) 66474-2-PBS (2B3B7). 100 µg. Concentration 1 mg/mL.

Detection antibody: SOD2 Monoclonal antibody, PBS Only (Detector) 66474-4-PBS (1G6D8). 100 µg. Concentration 1 mg/mL.

Unconjugated mouse monoclonal antibody pair in PBS only storage buffer at a concentration of 1 mg/mL, ready for conjugation.

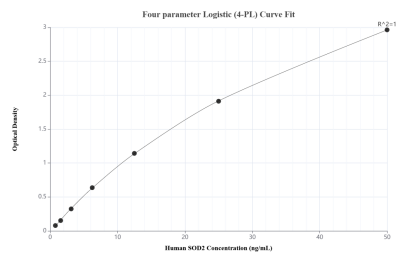
Matched antibody pairs are designed for use in a variety of assays and platforms that require matched antibody pairs.

Antibody use should be optimized for each application and assay.

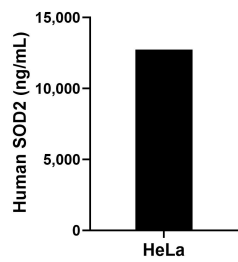
## Storage

**Storage:**  
Store at -80°C.  
**The product is shipped with ice packs. Upon receipt, store it immediately at -80°C**  
**Storage buffer:**  
PBS only

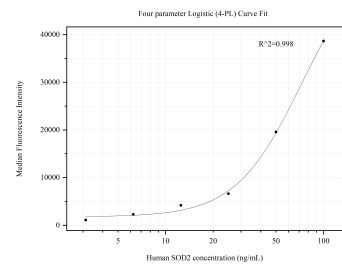
## Selected Validation Data



Sandwich ELISA standard curve of MP50535-2, Human SOD2 Monoclonal Matched Antibody Pair - PBS only. 66474-2-PBS was coated to a plate as the capture antibody and incubated with serial dilutions of standard Ag21388. 66474-4-PBS was HRP conjugated as the detection antibody. Range: 0.781-50 ng/mL



The mean SOD2 concentration was determined to be 12,745.00 ng/mL in HeLa cell extract based on a 1.80 mg/mL extract load.



Cytometric bead array standard curve of MP50535-2, SOD2 Monoclonal Matched Antibody Pair, PBS Only. Capture antibody: 66474-2-PBS. Detection antibody: 66474-4-PBS. Standard:Ag21388. Range: 3.125-100 ng/mL