

# Osteopontin Monoclonal Matched Antibody Pair, PBS Only

Catalog Number: **MP50455-4**

## Capture Antibody Information

Catalog Number: 68983-4-PBS	Clone ID: 1B6A1	Conjugate: Unconjugated
Host: Mouse	Reactivity: human	Full name: secreted phosphoprotein 1
Isotype: IgG1	GenBank: BC007016	Gene ID: 6696
Purification Method: Protein G purification	Immunogen Catalog Number: Ag19216	

## Detection Antibody Information

Catalog Number: 68983-2-PBS	Clone ID: 1E12B12	Conjugate: Unconjugated
Host: Mouse	Reactivity: human	Full name: secreted phosphoprotein 1
Isotype: IgG1	GenBank: BC007016	Gene ID: 6696
Purification Method: Protein G purification	Immunogen Catalog Number: Ag19216	

## Applications

Tested Applications: Cytometric bead array	Range: 3.125-100 ng/mL (Cytometric Bead Array)	Recommended Dilutions: It is recommended that this reagent should be titrated in each testing system to obtain optimal results.
---	---	--

## Product Information

MP50455-4 targets Osteopontin in immunoassays as a matched antibody pair. Validated in Cytometric bead array.

Capture antibody: Osteopontin Monoclonal antibody, PBS Only (Capture/Detector) 68983-4-PBS (1B6A1). 100 µg. Concentration 1 mg/mL.

Detection antibody: Osteopontin Monoclonal antibody, PBS Only (Detector) 68983-2-PBS (1E12B12). 100 µg. Concentration 1 mg/mL.

Unconjugated mouse monoclonal antibody pair in PBS only storage buffer at a concentration of 1 mg/mL, ready for conjugation.

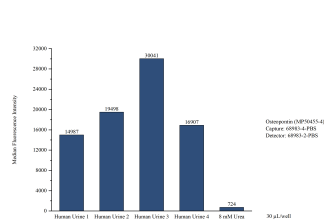
Matched antibody pairs are designed for use in a variety of assays and platforms that require matched antibody pairs.

Antibody use should be optimized for each application and assay.

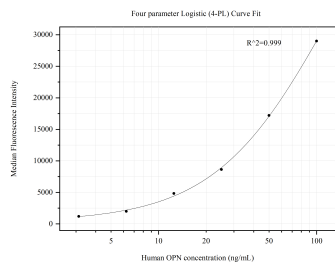
## Storage

Storage:  
Store at -80°C.  
**The product is shipped with ice packs. Upon receipt, store it immediately at -80°C**  
Storage buffer:  
PBS only

## Selected Validation Data



Cytometric bead array of Human urine using MP50455-4, Osteopontin Monoclonal Matched Antibody Pair, PBS Only. Capture antibody: 68983-4-PBS. Detection antibody: 68983-2-PBS. Urine of four individual healthy human donors was analyzed using MP50455-4.



Cytometric bead array standard curve of MP50455-4, OPN, SPP1 Monoclonal Matched Antibody Pair, PBS Only. Capture antibody: 68983-4-PBS. Detection antibody: 68983-2-PBS. Standard:Ag19216. Range: 3.125-100 ng/mL.