

# Osteopontin Monoclonal Matched Antibody Pair, PBS Only

Catalog Number: **MP50455-3**

## Capture Antibody Information

<b>Catalog Number:</b> 68983-4-PBS	<b>Clone ID:</b> 1B6A1	<b>Conjugate:</b> Unconjugated
<b>Host:</b> Mouse	<b>Reactivity:</b> human	<b>Full name:</b> secreted phosphoprotein 1
<b>Isotype:</b> IgG1	<b>GenBank:</b> BC007016	<b>Gene ID:</b> 6696
<b>Purification Method:</b> Protein G purification	<b>Immunogen Catalog Number:</b> Ag19216	

## Detection Antibody Information

<b>Catalog Number:</b> 68983-5-PBS	<b>Clone ID:</b> 2H7E10	<b>Conjugate:</b> Unconjugated
<b>Host:</b> Mouse	<b>Reactivity:</b> human	<b>Full name:</b> secreted phosphoprotein 1
<b>Isotype:</b> IgG1	<b>GenBank:</b> BC007016	<b>Gene ID:</b> 6696
<b>Purification Method:</b> Protein G Magarose purification	<b>Immunogen Catalog Number:</b> Ag19216	

## Applications

<b>Tested Applications:</b> Cytometric bead array	<b>Range:</b> 3.125-100 ng/mL (Cytometric Bead Array)	<b>Recommended Dilutions:</b> It is recommended that this reagent should be titrated in each testing system to obtain optimal results.
--	--	---

## Product Information

MP50455-3 targets Osteopontin in immunoassays as a matched antibody pair. Validated in Cytometric bead array.

Capture antibody: Osteopontin Monoclonal antibody, PBS Only (Capture/Detector) 68983-4-PBS (1B6A1). 100 µg. Concentration 1 mg/mL.

Detection antibody: Osteopontin Monoclonal antibody, PBS Only (Detector) 68983-5-PBS (2H7E10). 100 µg. Concentration 1 mg/mL.

Unconjugated mouse monoclonal antibody pair in PBS only storage buffer at a concentration of 1 mg/mL, ready for conjugation.

Matched antibody pairs are designed for use in a variety of assays and platforms that require matched antibody pairs.

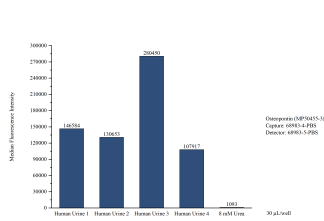
Antibody use should be optimized for each application and assay.

## Storage

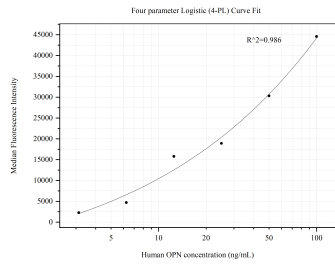
**Storage:**  
Store at -80°C.  
**The product is shipped with ice packs. Upon receipt, store it immediately at -80°C**

**Storage buffer:**  
PBS only

# Selected Validation Data



Cytometric bead array of Human urine using MP50455-3, Osteopontin Monoclonal Matched Antibody Pair, PBS Only. Capture antibody: 68983-4-PBS. Detection antibody: 68983-5-PBS. Urine of four individual healthy human donors was analyzed using MP50455-3.



Cytometric bead array standard curve of MP50455-3, OPN, SPP1 Monoclonal Matched Antibody Pair, PBS Only. Capture antibody: 68983-4-PBS. Detection antibody: 68983-5-PBS. Standard: Ag19216. Range: 3.125-100 ng/mL.