

# EIF5A Monoclonal Matched Antibody Pair, PBS Only

Catalog Number:MP50372-1

## Capture Antibody Information

Catalog Number:  
67214-2-PBS  
Host:  
Mouse  
Isotype:  
IgG1  
Purification Method:  
Protein G purification

Clone ID:  
1E3E10  
Reactivity:  
human  
GenBank:  
BC001832  
Immunogen Catalog Number:  
Ag28588

Conjugate:  
Unconjugated  
Full name:  
eukaryotic translation initiation factor 5A  
Gene ID:  
1984

## Detection Antibody Information

Catalog Number:  
67214-3-PBS  
Host:  
Mouse  
Isotype:  
IgG1  
Purification Method:  
Protein G Magarose purification

Clone ID:  
1D6C11  
Reactivity:  
human  
GenBank:  
BC001832  
Immunogen Catalog Number:  
Ag28588

Conjugate:  
Unconjugated  
Full name:  
eukaryotic translation initiation factor 5A  
Gene ID:  
1984

## Applications

Tested Applications:  
Cytometric bead array, Sandwich ELISA

Range:  
1.563-50 ng/mL (Cytometric Bead Array)  
1.56-100 ng/mL (Sandwich ELISA)

Recommended Dilutions:  
It is recommended that this reagent should be titrated in each testing system to obtain optimal results.

## Product Information

MP50372-1 targets EIF5A in immunoassays as a matched antibody pair. Validated in Cytometric bead array, Sandwich ELISA.

Capture antibody: EIF5A Monoclonal antibody, PBS Only (Capture) 67214-2-PBS (1E3E10). 100 µg. Concentration 1 mg/mL.

Detection antibody: EIF5A Monoclonal antibody, PBS Only (Detector) 67214-3-PBS (1D6C11). 100 µg. Concentration 1 mg/mL.

Unconjugated mouse monoclonal antibody pair in PBS only storage buffer at a concentration of 1 mg/mL, ready for conjugation.

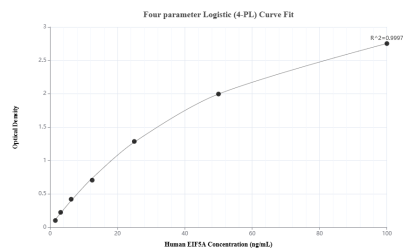
Matched antibody pairs are designed for use in a variety of assays and platforms that require matched antibody pairs.

Antibody use should be optimized for each application and assay.

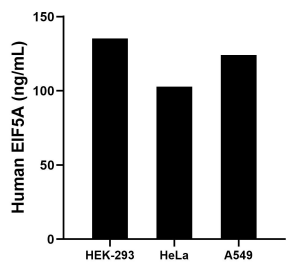
## Storage

Storage:  
Store at -80°C.  
The product is shipped with ice packs. Upon receipt, store it immediately at -80°C  
Storage buffer:  
PBS only

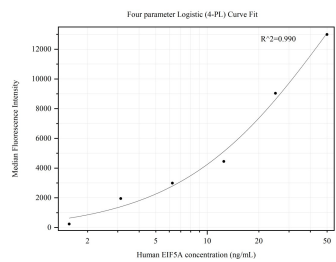
## Selected Validation Data



Sandwich ELISA standard curve of MP50372-1, Human EIF5A Monoclonal Matched Antibody Pair - PBS only. 67214-2-PBS was coated to a plate as the capture antibody and incubated with serial dilutions of standard Ag1849. 67214-3-PBS was HRP conjugated as the detection antibody. Range: 1.56-100 ng/mL



The mean EIF5A concentration was determined to be 135.22 ng/mL in HEK-293 cell extract based on a 2.2 mg/mL extract load, 102.87 ng/mL in HeLa cell extract based on a 1.8 mg/mL extract load and 124.18 ng/mL in A549 cell extract based on a 3.1 mg/mL extract load.



Cytometric bead array standard curve of MP50372-1, EIF5A Monoclonal Matched Antibody Pair, PBS Only. Capture antibody: 67214-2-PBS. Detection antibody: 67214-3-PBS. Standard: Ag1849. Range: 1.563-50 ng/mL