

# ANP32B Monoclonal Matched Antibody Pair, PBS Only

Catalog Number: **MP50363-3**

## Capture Antibody Information

<b>Catalog Number:</b> 66160-3-PBS	<b>Clone ID:</b> 1H3E5	<b>Conjugate:</b> Unconjugated
<b>Host:</b> Mouse	<b>Reactivity:</b> human	<b>Full name:</b> acidic (leucine-rich) nuclear phosphoprotein 32 family, member B
<b>Isotype:</b> IgG1	<b>GenBank:</b> BC013003	<b>Gene ID:</b> 10541
<b>Purification Method:</b> Protein G purification	<b>Immunogen Catalog Number:</b> Ag1274	

## Detection Antibody Information

<b>Catalog Number:</b> 66160-2-PBS	<b>Clone ID:</b> 3B6G9	<b>Conjugate:</b> Unconjugated
<b>Host:</b> Mouse	<b>Reactivity:</b> human	<b>Full name:</b> acidic (leucine-rich) nuclear phosphoprotein 32 family, member B
<b>Isotype:</b> IgG1	<b>GenBank:</b> BC013003	<b>Gene ID:</b> 10541
<b>Purification Method:</b> Protein A purification	<b>Immunogen Catalog Number:</b> Ag1274	

## Applications

<b>Tested Applications:</b> Cytometric bead array, Sandwich ELISA	<b>Range:</b> 1.563-200 ng/mL (Cytometric Bead Array) 19.5-1250 pg/mL (Sandwich ELISA)	<b>Recommended Dilutions:</b> It is recommended that this reagent should be titrated in each testing system to obtain optimal results.
--	--	---

## Product Information

MP50363-3 targets ANP32B in immunoassays as a matched antibody pair. Validated in Cytometric bead array, Sandwich ELISA.

Capture antibody: ANP32B Monoclonal antibody, PBS Only (Capture/Detector) 66160-3-PBS (1H3E5). 100 µg. Concentration 1 mg/mL.

Detection antibody: ANP32B Monoclonal antibody, PBS Only (Detector) 66160-2-PBS (3B6G9). 100 µg. Concentration 1 mg/mL.

Unconjugated mouse monoclonal antibody pair in PBS only storage buffer at a concentration of 1 mg/mL, ready for conjugation.

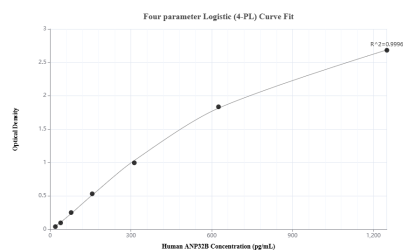
Matched antibody pairs are designed for use in a variety of assays and platforms that require matched antibody pairs.

Antibody use should be optimized for each application and assay.

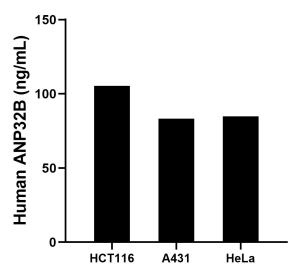
## Storage

**Storage:**  
Store at -80°C.  
**The product is shipped with ice packs. Upon receipt, store it immediately at -80°C**  
**Storage buffer:**  
PBS only

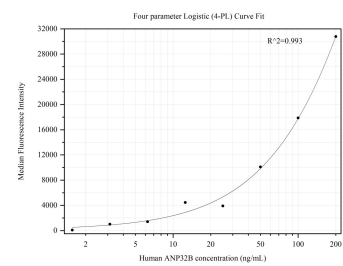
## Selected Validation Data



Sandwich ELISA standard curve of MP50363-3, Human ANP32B Monoclonal Matched Antibody Pair - PBS only. 66160-3-PBS was coated to a plate as the capture antibody and incubated with serial dilutions of standard Ag1274. 66160-2-PBS was HRP conjugated as the detection antibody. Range: 19.5-1250 pg/mL



The mean ANP32B concentration was determined to be 105.34 ng/mL in HCT116 cell extract based on a 2.0 mg/mL extract load, 83.16 ng/mL in A431 cell extract based on a 1.3 mg/mL extract load and 84.78 ng/mL in HeLa cell extract based on a 1.5 mg/mL extract load.



Cytometric bead array standard curve of MP50363-3, ANP32B Monoclonal Matched Antibody Pair, PBS Only. Capture antibody: 66160-3-PBS. Detection antibody: 66160-2-PBS. Standard: Ag1274. Range: 1.563-200 ng/mL