

# PRAME Monoclonal Matched Antibody Pair, PBS Only

Catalog Number: MP50344-1

## Capture Antibody Information

Catalog Number:  
68097-2-PBS  
Host:  
Mouse  
Isotype:  
IgG1  
Purification Method:  
Protein G purification

Clone ID:  
5H11B6  
Reactivity:  
human  
GenBank:  
BC014074  
Immunogen Catalog Number:  
Ag1906

Conjugate:  
Unconjugated  
Full name:  
preferentially expressed antigen in melanoma  
Gene ID:  
23532

## Detection Antibody Information

Catalog Number:  
68097-3-PBS  
Host:  
Mouse  
Isotype:  
IgG2b  
Purification Method:  
Protein A purification

Clone ID:  
2G1H5  
Reactivity:  
human  
GenBank:  
BC014074  
Immunogen Catalog Number:  
Ag1906

Conjugate:  
Unconjugated  
Full name:  
preferentially expressed antigen in melanoma  
Gene ID:  
23532

## Applications

Tested Applications:  
Cytometric bead array, Sandwich ELISA

Range:  
6.25-100 ng/mL (Cytometric Bead Array)  
3.13-200 ng/mL (Sandwich ELISA)

Recommended Dilutions:  
It is recommended that this reagent should be titrated in each testing system to obtain optimal results.

## Product Information

MP50344-1 targets PRAME in immunoassays as a matched antibody pair. Validated in Cytometric bead array, Sandwich ELISA.

Capture antibody: PRAME Monoclonal antibody, PBS Only (Capture) 68097-2-PBS (5H11B6). 100 µg. Concentration 1 mg/mL.

Detection antibody: PRAME Monoclonal antibody, PBS Only (Detector) 68097-3-PBS (2G1H5). 100 µg. Concentration 1 mg/mL.

Unconjugated mouse monoclonal antibody pair in PBS only storage buffer at a concentration of 1 mg/mL, ready for conjugation.

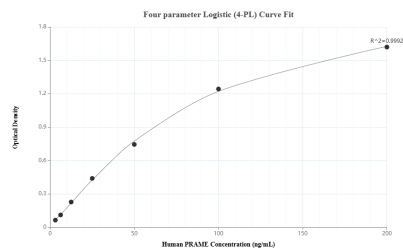
Matched antibody pairs are designed for use in a variety of assays and platforms that require matched antibody pairs.

Antibody use should be optimized for each application and assay.

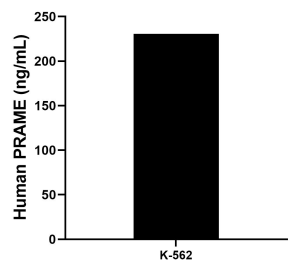
## Storage

Storage:  
Store at -80°C.  
The product is shipped with ice packs. Upon receipt, store it immediately at -80°C  
Storage buffer:  
PBS only

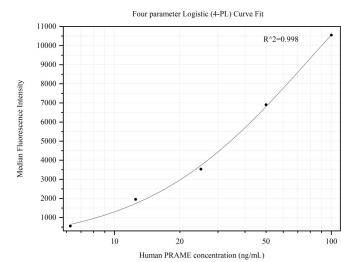
## Selected Validation Data



Sandwich ELISA standard curve of MP50344-1, Human PRAME Monoclonal Matched Antibody Pair - PBS only. 68097-2-PBS was coated to a plate as the capture antibody and incubated with serial dilutions of standard Ag1906. 68097-3-PBS was HRP conjugated as the detection antibody. Range: 3.13-200 ng/mL



The mean PRAME concentration was determined to be 230.66 ng/mL in K-562 cell extract based on a 2.5 mg/mL extract load.



Cytometric bead array standard curve of MP50344-1, PRAME Monoclonal Matched Antibody Pair, PBS Only. Capture antibody: 68097-2-PBS. Detection antibody: 68097-3-PBS. Standard: Ag1906. Range: 6.25-100 ng/mL