

TMEM106B Monoclonal Matched Antibody Pair, PBS Only

Catalog Number: **MP50326-1**

Capture Antibody Information

Catalog Number: 60333-2-PBS	Clone ID: 4F3E9	Conjugate: Unconjugated
Host: Mouse	Reactivity: human	Full name: transmembrane protein 106B
Isotype: IgG1	GenBank: BC033901	Gene ID: 54664
Purification Method: Protein A purification	Immunogen Catalog Number: Ag21448	

Detection Antibody Information

Catalog Number: 60333-3-PBS	Clone ID: 4C9C11	Conjugate: Unconjugated
Host: Mouse	Reactivity: human	Full name: transmembrane protein 106B
Isotype: IgG2a	GenBank: BC033901	Gene ID: 54664
Purification Method: Protein A purification	Immunogen Catalog Number: Ag21448	

Applications

Tested Applications: Cytometric bead array, Sandwich ELISA	Range: 0.195-25 ng/mL (Cytometric Bead Array) 0.313-20 ng/mL (Sandwich ELISA)	Recommended Dilutions: It is recommended that this reagent should be titrated in each testing system to obtain optimal results.
--	--	---

Product Information

MP50326-1 targets TMEM106B in immunoassays as a matched antibody pair. Validated in Cytometric bead array, Sandwich ELISA.

Capture antibody: TMEM106B Monoclonal antibody, PBS Only (Capture) 60333-2-PBS (4F3E9). 100 µg. Concentration 1 mg/mL.

Detection antibody: TMEM106B Monoclonal antibody, PBS Only (Detector) 60333-3-PBS (4C9C11). 100 µg. Concentration 1 mg/mL.

Unconjugated mouse monoclonal antibody pair in PBS only storage buffer at a concentration of 1 mg/mL, ready for conjugation.

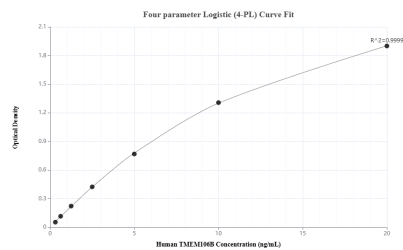
Matched antibody pairs are designed for use in a variety of assays and platforms that require matched antibody pairs.

Antibody use should be optimized for each application and assay.

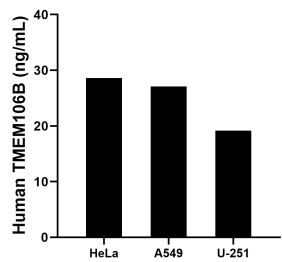
Storage

Storage:
Store at -80°C.
The product is shipped with ice packs. Upon receipt, store it immediately at -80°C
Storage buffer:
PBS only

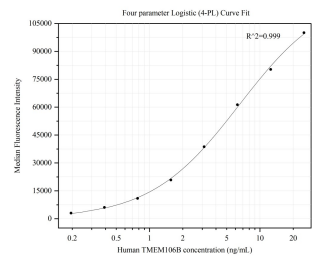
Selected Validation Data



Sandwich ELISA standard curve of MP50326-1, Human TMEM106B Monoclonal Matched Antibody Pair - PBS only. 60333-2-PBS was coated to a plate as the capture antibody and incubated with serial dilutions of standard Ag21448. 60333-3-PBS was HRP conjugated as the detection antibody. Range: 0.313-20 ng/mL



The mean TMEM106B concentration was determined to be 28.61 ng/mL in HeLa cell extract based on a 2.1 mg/mL extract load, 27.06 ng/mL in A549 cell extract based on a 1.5 mg/mL extract load and 19.17 ng/mL in U-251 cell extract based on a 1.4 mg/mL extract load.



Cytometric bead array standard curve of MP50326-1, TMEM106B Monoclonal Matched Antibody Pair, PBS Only. Capture antibody: 60333-2-PBS. Detection antibody: 60333-3-PBS. Standard: Ag21448. Range: 0.195-25 ng/mL