

CD16a Monoclonal Matched Antibody Pair, PBS Only

Catalog Number: **MP50298-4**

Capture Antibody Information

Catalog Number:
65090-1-PBS
Host:
Mouse
Isotype:
IgG1, kappa
Purification Method:
Protein G purification

Clone ID:
3G8
Reactivity:
human
GenBank:
BC017865

Conjugate:
Unconjugated
Full name:
Fc fragment of IgG, low affinity IIIa, receptor (CD16a)
Gene ID:
2214

Detection Antibody Information

Catalog Number:
68897-3-PBS
Host:
Mouse
Isotype:
IgG1
Purification Method:
Protein G purification

Clone ID:
2D8F2
Reactivity:
human
GenBank:
BC017865

Conjugate:
Unconjugated
Full name:
Fc fragment of IgG, low affinity IIIa, receptor (CD16a)
Gene ID:
2214

Applications

Tested Applications:
Cytometric bead array

Range:
0.781-100 ng/mL (Cytometric Bead Array)

Recommended Dilutions:
It is recommended that this reagent should be titrated in each testing system to obtain optimal results.

Product Information

MP50298-4 targets CD16a in immunoassays as a matched antibody pair. Validated in Cytometric bead array.

Capture antibody: Anti-Human CD16 (3G8), PBS Only (Capture) 65090-1-PBS (3G8). 100 µg. Concentration 1 mg/mL.

Detection antibody: CD16 Monoclonal antibody, PBS Only (Detector) 68897-3-PBS (2D8F2). 100 µg. Concentration 1 mg/mL.

Unconjugated mouse monoclonal antibody pair in PBS only storage buffer at a concentration of 1 mg/mL, ready for conjugation.

Matched antibody pairs are designed for use in a variety of assays and platforms that require matched antibody pairs.

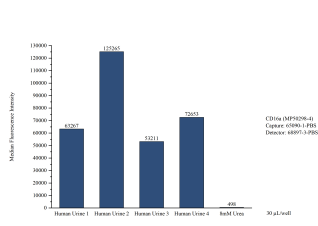
Antibody use should be optimized for each application and assay.

Storage

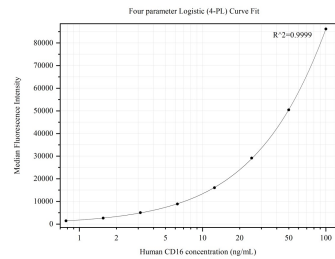
Storage:
Store at -80°C.
The product is shipped with ice packs. Upon receipt, store it immediately at -80°C
Storage buffer:
PBS only

48

Selected Validation Data



Cytometric bead array of Human urine using MP50298-4, CD16a Monoclonal Matched Antibody Pair, PBS Only. Capture antibody: 65090-1-PBS. Detection antibody: 68897-3-PBS. Urine of four individual healthy human donors was analyzed using MP50298-4.



Cytometric bead array standard curve of MP50298-4, CD16 Monoclonal Matched Antibody Pair, PBS Only. Capture antibody: 65090-1-PBS. Detection antibody: 68897-3-PBS. Standard:Eg31662. Range: 0.781-100 ng/mL