

CALCA/Calcitonin Monoclonal Matched Antibody Pair, PBS Only

Catalog Number: **MP50293-2**

Capture Antibody Information

Catalog Number:
68891-1-PBS
Host:
Mouse
Isotype:
IgG1
Purification Method:
Protein G purification

Clone ID:
4E2B10
Reactivity:
human
GenBank:
BC093753
Immunogen Catalog Number:
Ag17737

Conjugate:
Unconjugated
Full name:
Calcitonin
Gene ID:
796

Detection Antibody Information

Catalog Number:
68774-3-PBS
Host:
Mouse
Isotype:
IgG1
Purification Method:
Protein G purification

Clone ID:
1B8C4
Reactivity:
human
GenBank:
BC093753
Immunogen Catalog Number:
Ag26141

Conjugate:
Unconjugated
Full name:
Calcitonin
Gene ID:
796

Applications

Tested Applications:
Cytometric bead array

Range:
0.781-100 ng/mL (Cytometric Bead Array)

Recommended Dilutions:
It is recommended that this reagent should be titrated in each testing system to obtain optimal results.

Product Information

MP50293-2 targets CALCA/Calcitonin in immunoassays as a matched antibody pair. Validated in Cytometric bead array.

Capture antibody: CALCA/Calcitonin Monoclonal antibody, PBS Only (Capture) 68891-1-PBS (4E2B10). 100 µg. Concentration 1 mg/mL.

Detection antibody: CALCA/Calcitonin Monoclonal antibody, PBS Only (Detector) 68774-3-PBS (1B8C4). 100 µg. Concentration 1 mg/mL.

Unconjugated mouse monoclonal antibody pair in PBS only storage buffer at a concentration of 1 mg/mL, ready for conjugation.

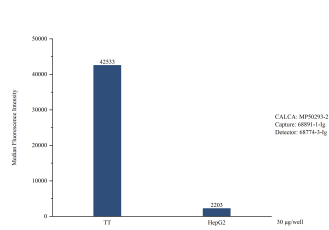
Matched antibody pairs are designed for use in a variety of assays and platforms that require matched antibody pairs.

Antibody use should be optimized for each application and assay.

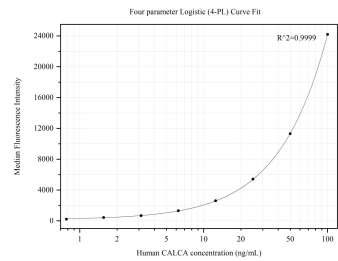
Storage

Storage:
Store at -80°C.
The product is shipped with ice packs. Upon receipt, store it immediately at -80°C
Storage buffer:
PBS only

Selected Validation Data



Cytometric bead array in cell lysate using MP50293-2, CALCA Monoclonal Matched Antibody Pair, PBS Only. Capture antibody: 68891-1-PBS. Detection antibody: 68774-3-PBS. Cell lysate: TT, HepG2.



Cytometric bead array standard curve of MP50293-2, CALCA Monoclonal Matched Antibody Pair, PBS Only. Capture antibody: 68891-1-PBS. Detection antibody: 68774-3-PBS. Standard: Ag26141. Range: 0.781-100 ng/mL.