

# Cytokeratin 7 Monoclonal Matched Antibody Pair, PBS Only

Catalog Number:MP50253-1

## Capture Antibody Information

Catalog Number: 68859-1-PBS	Clone ID: 3D4A7	Conjugate: Unconjugated
Host: Mouse	Reactivity: human	Full name: keratin 7
Isotype: IgG1	GenBank: BC002700	Gene ID: 3855
Purification Method: Protein G Magarose purification	Immunogen Catalog Number: Ag17703	

## Detection Antibody Information

Catalog Number: 68859-2-PBS	Clone ID: 2C11G9	Conjugate: Unconjugated
Host: Mouse	Reactivity: human	Full name: keratin 7
Isotype: IgG1	GenBank: BC002700	Gene ID: 3855
Purification Method: Protein G purification	Immunogen Catalog Number: Ag17703	

## Applications

Tested Applications: Cytometric bead array, Sandwich ELISA	Range: 1.563-200 ng/mL (Cytometric Bead Array) 0.781-25 ng/mL (Sandwich ELISA)	Recommended Dilutions: It is recommended that this reagent should be titrated in each testing system to obtain optimal results.
---	--	--

## Product Information

MP50253-1 targets Cytokeratin 7 in immunoassays as a matched antibody pair. Validated in Cytometric bead array, Sandwich ELISA.

Capture antibody: Cytokeratin 7 Monoclonal antibody, PBS Only (Capture) 68859-1-PBS (3D4A7). 100 µg. Concentration 1 mg/mL.

Detection antibody: Cytokeratin 7 Monoclonal antibody, PBS Only (Detector) 68859-2-PBS (2C11G9). 100 µg. Concentration 1 mg/mL.

Unconjugated mouse monoclonal antibody pair in PBS only storage buffer at a concentration of 1 mg/mL, ready for conjugation.

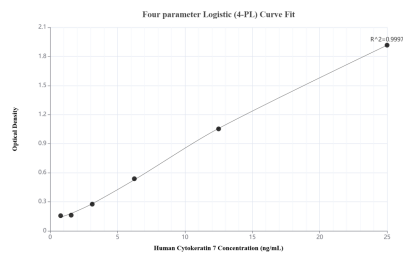
Matched antibody pairs are designed for use in a variety of assays and platforms that require matched antibody pairs.

Antibody use should be optimized for each application and assay.

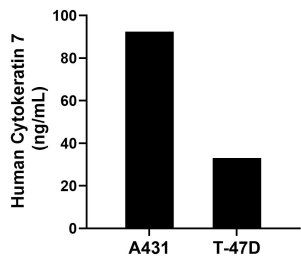
## Storage

Storage:  
Store at -80°C.  
**The product is shipped with ice packs. Upon receipt, store it immediately at -80°C**  
Storage buffer:  
PBS only

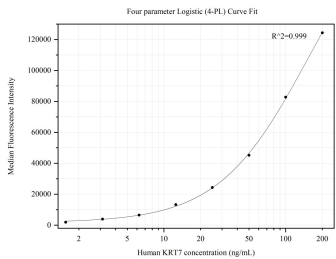
## Selected Validation Data



Sandwich ELISA standard curve of MP50253-1, Human Cytokeratin 7 Monoclonal Matched Antibody Pair - PBS only. 68859-1-PBS was coated to a plate as the capture antibody and incubated with serial dilutions of standard Ag17703. 68859-2-PBS was HRP conjugated as the detection antibody. Range: 0.781-25 ng/mL



The mean Cytokeratin 7 concentration was determined to be 92.40 ng/mL in A431 cell extract based on a 1.50 mg/mL extract load and 33.00 ng/mL in T-47D cell extract based on a 1.80 mg/mL extract load.



Cytometric bead array standard curve of MP50253-1, KRT7 Monoclonal Matched Antibody Pair, PBS Only. Capture antibody: 68859-1-PBS. Detection antibody: 68859-2-PBS. Standard: Ag17703. Range: 1.563-200 ng/mL .