

# RICTOR Monoclonal Matched Antibody Pair, PBS Only

Catalog Number: **MP50234-1**

## Capture Antibody Information

**Catalog Number:**  
66867-2-PBS  
**Host:**  
Mouse  
**Isotype:**  
IgG1  
**Purification Method:**  
Protein G purification

**Clone ID:**  
1D1C4  
**Reactivity:**  
Human, mouse, rat  
**GenBank:**  
BC029608  
**Immunogen Catalog Number:**  
Ag28487

**Conjugate:**  
Unconjugated  
**Full name:**  
rapamycin-insensitive companion of mTOR  
**Gene ID:**  
253260

## Detection Antibody Information

**Catalog Number:**  
66867-3-PBS  
**Host:**  
Mouse  
**Isotype:**  
IgG1  
**Purification Method:**  
Protein G purification

**Clone ID:**  
1E3E7  
**Reactivity:**  
Human  
**GenBank:**  
BC029608  
**Immunogen Catalog Number:**  
Ag28487

**Conjugate:**  
Unconjugated  
**Full name:**  
rapamycin-insensitive companion of mTOR  
**Gene ID:**  
253260

## Applications

**Tested Applications:**  
Cytometric bead array

**Range:**  
0.781-100 ng/mL (Cytometric Bead Array)

**Recommended Dilutions:**  
It is recommended that this reagent should be titrated in each testing system to obtain optimal results.

## Product Information

MP50234-1 targets RICTOR in immunoassays as a matched antibody pair. Validated in Cytometric bead array.

Capture antibody: RICTOR Monoclonal antibody, PBS Only (Capture) 66867-2-PBS (1D1C4). 100 µg. Concentration 1 mg/mL.

Detection antibody: RICTOR Monoclonal antibody, PBS Only (Detector) 66867-3-PBS (1E3E7). 100 µg. Concentration 1 mg/mL.

Unconjugated mouse monoclonal antibody pair in PBS only storage buffer at a concentration of 1 mg/mL, ready for conjugation.

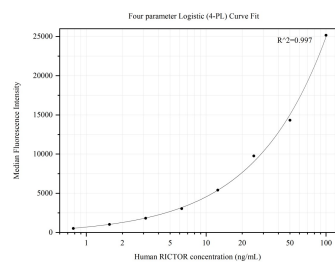
Matched antibody pairs are designed for use in a variety of assays and platforms that require matched antibody pairs.

Antibody use should be optimized for each application and assay.

## Storage

**Storage:**  
Store at -80°C.  
**Storage buffer:**  
PBS only

# Selected Validation Data



Cytometric bead array standard curve of MP50234-1, RICTOR Monoclonal Matched Antibody Pair, PBS Only. Capture antibody: 66867-2-PBS. Detection antibody: 66867-3-PBS. Standard:Ag28487. Range: 0.781-100 ng/mL.