

ALAS1 Monoclonal Matched Antibody Pair, PBS Only

Catalog Number: **MP50232-1**

Capture Antibody Information

Catalog Number:
68567-2-PBS
Host:
Mouse
Isotype:
IgG1
Purification Method:
Protein G Magarose purification

Clone ID:
2G12C7
Reactivity:
Human
GenBank:
BC011798
Immunogen Catalog Number:
Ag33580

Conjugate:
Unconjugated
Full name:
aminolevulinate, delta-, synthase 1
Gene ID:
211

Detection Antibody Information

Catalog Number:
68567-3-PBS
Host:
Mouse
Isotype:
IgG1
Purification Method:
Protein G Magarose purification

Clone ID:
2E1E3
Reactivity:
Human
GenBank:
BC011798
Immunogen Catalog Number:
Ag33580

Conjugate:
Unconjugated
Full name:
aminolevulinate, delta-, synthase 1
Gene ID:
211

Applications

Tested Applications:
Cytometric bead array

Range:
0.195-25 ng/mL (Cytometric Bead Array)

Recommended Dilutions:
It is recommended that this reagent should be titrated in each testing system to obtain optimal results.

Product Information

MP50232-1 targets ALAS1 in immunoassays as a matched antibody pair. Validated in Cytometric bead array.

Capture antibody: ALAS1 Monoclonal antibody, PBS Only (Capture) 68567-2-PBS (2G12C7). 100 µg. Concentration 1 mg/mL.

Detection antibody: ALAS1 Monoclonal antibody, PBS Only (Detector) 68567-3-PBS (2E1E3). 100 µg. Concentration 1 mg/mL.

Unconjugated mouse monoclonal antibody pair in PBS only storage buffer at a concentration of 1 mg/mL, ready for conjugation.

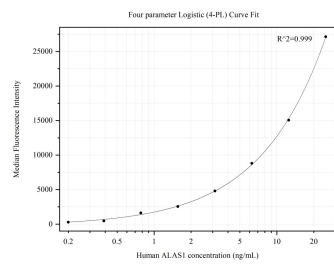
Matched antibody pairs are designed for use in a variety of assays and platforms that require matched antibody pairs.

Antibody use should be optimized for each application and assay.

Storage

Storage:
Store at -80°C.
Storage buffer:
PBS only

Selected Validation Data



Cytometric bead array standard curve of MP50232-1, ALAS1 Monoclonal Matched Antibody Pair, PBS Only. Capture antibody: 68567-2-PBS. Detection antibody: 68567-3-PBS. Standard:Ag33580. Range: 0.195-25 ng/mL