

# p63 Monoclonal Matched Antibody Pair, PBS Only

Catalog Number: **MP50229-1**

## Capture Antibody Information

Catalog Number: 60332-3-PBS	Clone ID: 5D5E12	Conjugate: Unconjugated
Host: Mouse	Reactivity: human	Full name: tumor protein p63
Isotype: IgG1	GenBank: BC039815	Gene ID: 8626
Purification Method: Protein G purification	Immunogen Catalog Number: Ag2791	

## Detection Antibody Information

Catalog Number: 60332-4-PBS	Clone ID: 1H10H7	Conjugate: Unconjugated
Host: Mouse	Reactivity: human	Full name: tumor protein p63
Isotype: IgG1	GenBank: BC039815	Gene ID: 8626
Purification Method: Protein G purification	Immunogen Catalog Number: Ag2791	

## Applications

Tested Applications: Cytometric bead array, Sandwich ELISA	Range: 3.125-100 ng/mL (Cytometric Bead Array) 6.25-400 ng/mL (Sandwich ELISA)	Recommended Dilutions: It is recommended that this reagent should be titrated in each testing system to obtain optimal results.
---	--	--

## Product Information

MP50229-1 targets p63 in immunoassays as a matched antibody pair. Validated in Cytometric bead array, Sandwich ELISA.

Capture antibody: p63 Monoclonal antibody, PBS Only (Capture) 60332-3-PBS (5D5E12). 100 µg. Concentration 1 mg/mL.

Detection antibody: p63 Monoclonal antibody, PBS Only (Detector) 60332-4-PBS (1H10H7). 100 µg. Concentration 1 mg/mL.

Unconjugated mouse monoclonal antibody pair in PBS only storage buffer at a concentration of 1 mg/mL, ready for conjugation.

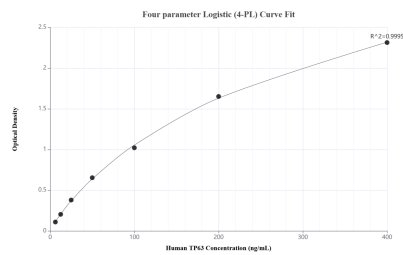
Matched antibody pairs are designed for use in a variety of assays and platforms that require matched antibody pairs.

Antibody use should be optimized for each application and assay.

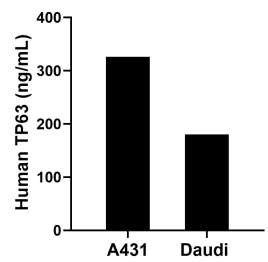
## Storage

Storage:  
Store at -80°C.  
**The product is shipped with ice packs. Upon receipt, store it immediately at -80°C**  
Storage buffer:  
PBS only

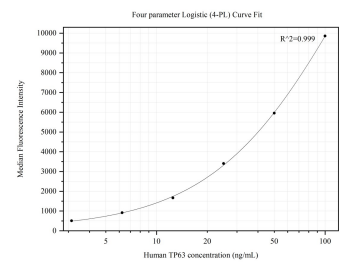
## Selected Validation Data



Sandwich ELISA standard curve of MP50229-1, Human TP63 Monoclonal Matched Antibody Pair - PBS only. 60332-3-PBS was coated to a plate as the capture antibody and incubated with serial dilutions of standard Ag2791. 60332-4-PBS was HRP conjugated as the detection antibody. Range: 6.25-400 ng/mL.



The mean TP63 concentration was determined to be 326.00 ng/mL in A431 cell extract based on a 1.50 mg/mL extract load and 180.00 ng/mL in Daudi cell extract based on a 1.80 mg/mL extract load.



Cytometric bead array standard curve of MP50229-1, TP63 Monoclonal Matched Antibody Pair, PBS Only. Capture antibody: 60332-3-PBS. Detection antibody: 60332-4-PBS. Standard: Ag2791. Range: 3.125-100 ng/mL.