

# CD23 Monoclonal Matched Antibody Pair, PBS Only

Catalog Number: **MP50220-1**

## Capture Antibody Information

**Catalog Number:**  
60208-2-PBS  
**Host:**  
Mouse  
**Isotype:**  
IgG2a  
**Purification Method:**  
Protein A purification

**Clone ID:**  
4C7C9  
**Reactivity:**  
human, mouse  
**GenBank:**  
BC064417  
**Immunogen Catalog Number:**  
Ag0425

**Conjugate:**  
Unconjugated  
**Full name:**  
Fc fragment of IgE, low affinity II, receptor for (CD23)  
**Gene ID:**  
2208

## Detection Antibody Information

**Catalog Number:**  
60208-3-PBS  
**Host:**  
Mouse  
**Isotype:**  
IgG2b  
**Purification Method:**  
Protein A Magarose purification

**Clone ID:**  
1A12A7  
**Reactivity:**  
human  
**GenBank:**  
BC064417  
**Immunogen Catalog Number:**  
Ag0425

**Conjugate:**  
Unconjugated  
**Full name:**  
Fc fragment of IgE, low affinity II, receptor for (CD23)  
**Gene ID:**  
2208

## Applications

**Tested Applications:**  
Cytometric bead array

**Range:**  
0.781-100 ng/mL (Cytometric Bead Array)

**Recommended Dilutions:**  
It is recommended that this reagent should be titrated in each testing system to obtain optimal results.

## Product Information

MP50220-1 targets CD23 in immunoassays as a matched antibody pair. Validated in Cytometric bead array.

Capture antibody: CD23 Monoclonal antibody, PBS Only (Capture) 60208-2-PBS (4C7C9). 100 µg. Concentration 1 mg/mL.

Detection antibody: CD23 Monoclonal antibody, PBS Only (Detector) 60208-3-PBS (1A12A7). 100 µg. Concentration 1 mg/mL.

Unconjugated mouse monoclonal antibody pair in PBS only storage buffer at a concentration of 1 mg/mL, ready for conjugation.

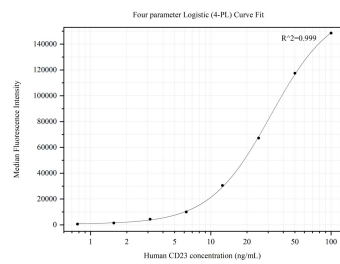
Matched antibody pairs are designed for use in a variety of assays and platforms that require matched antibody pairs.

Antibody use should be optimized for each application and assay.

## Storage

**Storage:**  
Store at -80°C.  
**The product is shipped with ice packs. Upon receipt, store it immediately at -80°C**  
**Storage buffer:**  
PBS only

# Selected Validation Data



Cytometric bead array standard curve of MP50220-1, CD23,FCER2 Monoclonal Matched Antibody Pair, PBS Only. Capture antibody: 60208-2-PBS. Detection antibody: 60208-3-PBS. Standard:Ag0425. Range: 0.781-100 ng/mL