

NLRP3 Monoclonal Matched Antibody Pair, PBS Only

Catalog Number: **MP50203-1**

Capture Antibody Information

Catalog Number:
68102-1-PBS
Host:
Mouse
Isotype:
IgG2a
Purification Method:
Protein A purification

Clone ID:
3H1A7
Reactivity:
human
GenBank:
NM_001079821
Immunogen Catalog Number:
Ag26289

Conjugate:
Unconjugated
Full name:
NLR family, pyrin domain containing 3
Gene ID:
114548

Detection Antibody Information

Catalog Number:
68102-2-PBS
Host:
Mouse
Isotype:
IgG2a
Purification Method:
Protein A purification

Clone ID:
4D4C1
Reactivity:
human
GenBank:
NM_001079821
Immunogen Catalog Number:
Ag26289

Conjugate:
Unconjugated
Full name:
NLR family, pyrin domain containing 3
Gene ID:
114548

Applications

Tested Applications:
Cytometric bead array, Sandwich ELISA

Range:
1.563-100 ng/mL (Cytometric Bead Array)
0.313-20 ng/mL (Sandwich ELISA)

Recommended Dilutions:
It is recommended that this reagent should be titrated in each testing system to obtain optimal results.

Product Information

MP50203-1 targets NLRP3 in immunoassays as a matched antibody pair. Validated in Cytometric bead array, Sandwich ELISA.

Capture antibody: NLRP3 Monoclonal antibody, PBS Only (Capture) 68102-1-PBS (3H1A7). 100 µg. Concentration 1 mg/mL.

Detection antibody: NLRP3 Monoclonal antibody, PBS Only (Detector) 68102-2-PBS (4D4C1). 100 µg. Concentration 1 mg/mL.

Unconjugated mouse monoclonal antibody pair in PBS only storage buffer at a concentration of 1 mg/mL, ready for conjugation.

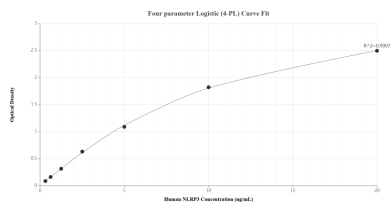
Matched antibody pairs are designed for use in a variety of assays and platforms that require matched antibody pairs.

Antibody use should be optimized for each application and assay.

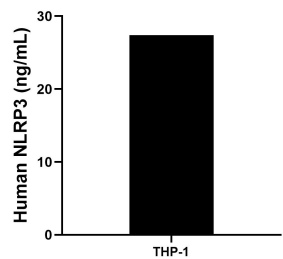
Storage

Storage:
Store at -80°C.
The product is shipped with ice packs. Upon receipt, store it immediately at -80°C
Storage buffer:
PBS only

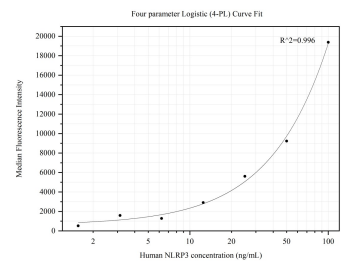
Selected Validation Data



Sandwich ELISA standard curve of MP50203-1, Human NLRP3 Monoclonal Matched Antibody Pair - PBS only. 68102-1-PBS was coated to a plate as the capture antibody and incubated with serial dilutions of standard Ag26289. 68102-2-PBS was HRP conjugated as the detection antibody. Range: 0.313-20 ng/mL



The mean NLRP3 concentration was determined to be 27.37 ng/mL in THP-1 cell extract based on a 1.50 mg/mL extract load.



Cytometric bead array standard curve of MP50203-1, NLRP3 Monoclonal Matched Antibody Pair, PBS Only. Capture antibody: 68102-1-PBS. Detection antibody: 68102-2-PBS. Standard: Ag26289. Range: 1.563-100 ng/mL