

# Phospho-P53 (Ser46) Monoclonal Matched Antibody Pair, PBS Only

Catalog Number: **MP50184-1**

## Capture Antibody Information

<b>Catalog Number:</b> 60283-2-PBS	<b>Clone ID:</b> 6C4B6	<b>Conjugate:</b> Unconjugated
<b>Host:</b> Mouse	<b>Reactivity:</b> human, rat	<b>Full name:</b> tumor protein p53
<b>Isotype:</b> IgG2b	<b>GenBank:</b> BC003596	<b>Gene ID:</b> 7157
<b>Purification Method:</b> Protein A purification	<b>Immunogen Catalog Number:</b> Ag0698	

## Detection Antibody Information

<b>Catalog Number:</b> 67900-1-PBS	<b>Clone ID:</b> 1D10A12	<b>Conjugate:</b> Unconjugated
<b>Host:</b> Mouse	<b>Reactivity:</b> human	<b>Full name:</b> tumor protein p53
<b>Isotype:</b> IgG1	<b>GenBank:</b> BC003596	<b>Gene ID:</b> 7157
<b>Purification Method:</b> Protein G purification		

## Applications

<b>Tested Applications:</b> Cytometric bead array	<b>Range:</b> N/A (Cytometric Bead Array)	<b>Recommended Dilutions:</b> It is recommended that this reagent should be titrated in each testing system to obtain optimal results.
------------------------------------------------------	----------------------------------------------	-------------------------------------------------------------------------------------------------------------------------------------------

## Product Information

MP50184-1 targets Phospho-P53 (Ser46) in immunoassays as a matched antibody pair. Validated in Cytometric bead array.

Capture antibody: P53 Monoclonal antibody, PBS Only (Capture/Detector) 60283-2-PBS (6C4B6). 100 µg. Concentration 1 mg/ml.

Detection antibody: Phospho-P53 (Ser46) Monoclonal antibody, PBS Only (Detector) 67900-1-PBS (1D10A12). 100 µg. Concentration 1 mg/ml.

Unconjugated mouse monoclonal antibody pair in PBS only storage buffer at a concentration of 1 mg/mL, ready for conjugation.

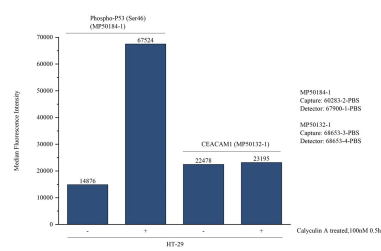
Matched antibody pairs are designed for use in a variety of assays and platforms that require matched antibody pairs.

Antibody use should be optimized for each application and assay.

## Storage

**Storage:**  
Store at -80°C.  
**The product is shipped with ice packs. Upon receipt, store it immediately at -80°C**  
**Storage buffer:**  
PBS only

# Selected Validation Data



Cytometric bead array in cell lysate using MP50184-1, Phospho-P53 (Ser46) Monoclonal Matched Antibody Pair, PBS Only. Capture antibody: 60283-2-PBS. Detection antibody: 67900-1-PBS. Cell lysate: Non-treated HT-29 and Calyculin A treated HT-29 (30  $\mu$ g/well). Non-related target CEA/CAM1 Monoclonal Matched Antibody Pair (MP50132-1) was served as control.