

# PGDS Monoclonal Matched Antibody Pair, PBS Only

Catalog Number: **MP50148-2**

## Capture Antibody Information

**Catalog Number:**  
68783-4-PBS

**Host:**  
Mouse

**Isotype:**  
IgG1

**Purification Method:**  
Protein G Magarose purification

**Clone ID:**  
2B3E1

**Reactivity:**  
human

**GenBank:**  
BC005939

**Immunogen Catalog Number:**  
Ag34483

**Conjugate:**  
Unconjugated

**Full name:**  
prostaglandin D2 synthase 21kDa (brain)

**Gene ID:**  
5730

## Detection Antibody Information

**Catalog Number:**  
68783-5-PBS

**Host:**  
Mouse

**Isotype:**  
IgG1

**Purification Method:**  
Protein G Magarose purification

**Clone ID:**  
2C2A6

**Reactivity:**  
human

**GenBank:**  
BC005939

**Immunogen Catalog Number:**  
Ag34483

**Conjugate:**  
Unconjugated

**Full name:**  
prostaglandin D2 synthase 21kDa (brain)

**Gene ID:**  
5730

## Applications

**Tested Applications:**  
Cytometric bead array

**Range:**  
0.781-100 ng/mL (Cytometric Bead Array)

**Recommended Dilutions:**  
It is recommended that this reagent should be titrated in each testing system to obtain optimal results.

## Product Information

MP50148-2 targets PGDS in immunoassays as a matched antibody pair. Validated in Cytometric bead array.

Capture antibody: PGDS Monoclonal antibody, PBS Only (Capture) 68783-4-PBS (2B3E1). 100  $\mu$ g. Concentration 1 mg/mL.

Detection antibody: PGDS Monoclonal antibody, PBS Only (Detector) 68783-5-PBS (2C2A6). 100  $\mu$ g. Concentration 1 mg/mL.

Unconjugated mouse monoclonal antibody pair in PBS only storage buffer at a concentration of 1 mg/mL, ready for conjugation.

Matched antibody pairs are designed for use in a variety of assays and platforms that require matched antibody pairs.

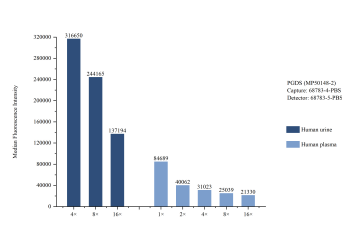
Antibody use should be optimized for each application and assay.

## Storage

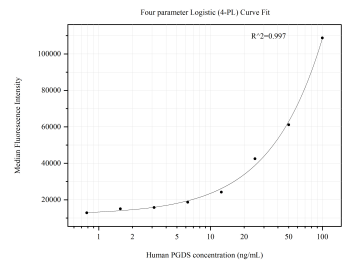
**Storage:**  
Store at -80°C.  
**The product is shipped with ice packs. Upon receipt, store it immediately at -80°C**

**Storage buffer:**  
PBS only

Selected Validation Data



Sample test of MP50148-2, PGDS Monoclonal Matched Antibody Pair, PBS Only. Capture antibody: 68783-4-PBS. Detection antibody: 68783-5-PBS.



Cytometric bead array standard curve of MP50148-2, PGDS Monoclonal Matched Antibody Pair, PBS Only. Capture antibody: 68783-4-PBS. Detection antibody: 68783-5-PBS. Standard:Ag34483. Range: 0.781-100 ng/mL.