

# GDF-15 Monoclonal Matched Antibody Pair, PBS Only

Catalog Number: **MP50133-6**

## Capture Antibody Information

<b>Catalog Number:</b> 68768-3-PBS	<b>Clone ID:</b> 2B4E6	<b>Conjugate:</b> Unconjugated
<b>Host:</b> Mouse	<b>Reactivity:</b> human	<b>Full name:</b> growth differentiation factor 15
<b>Isotype:</b> IgG1	<b>GenBank:</b> BC008962	<b>Gene ID:</b> 9518
<b>Purification Method:</b> Protein G Magarose purification	<b>Immunogen Catalog Number:</b> Ag33750	

## Detection Antibody Information

<b>Catalog Number:</b> 68768-2-PBS	<b>Clone ID:</b> 1B5D12	<b>Conjugate:</b> Unconjugated
<b>Host:</b> Mouse	<b>Reactivity:</b> human	<b>Full name:</b> growth differentiation factor 15
<b>Isotype:</b> IgG1	<b>GenBank:</b> BC008962	<b>Gene ID:</b> 9518
<b>Purification Method:</b> Protein A purification	<b>Immunogen Catalog Number:</b> Ag33750	

## Applications

<b>Tested Applications:</b> Sandwich ELISA	<b>Range:</b> 1.563-100 ng/mL (Sandwich ELISA)	<b>Recommended Dilutions:</b> It is recommended that this reagent should be titrated in each testing system to obtain optimal results.
---	---	---

## Product Information

MP50133-6 targets GDF-15 in immunoassays as a matched antibody pair. Validated in Sandwich ELISA.

Capture antibody: GDF-15 Monoclonal antibody, PBS Only (Capture/Detector) 68768-3-PBS (2B4E6). 100 µg. Concentration 1 mg/mL.

Detection antibody: GDF15 Monoclonal antibody, PBS Only (Capture/Detector) 68768-2-PBS (1B5D12). 100 µg. Concentration 1 mg/mL.

Unconjugated mouse monoclonal antibody pair in PBS only storage buffer at a concentration of 1 mg/mL, ready for conjugation.

Matched antibody pairs are designed for use in a variety of assays and platforms that require matched antibody pairs.

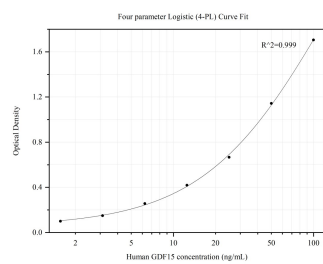
Antibody use should be optimized for each application and assay.

## Storage

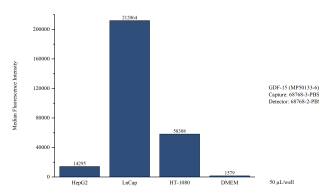
**Storage:**  
Store at -80°C.  
**The product is shipped with ice packs. Upon receipt, store it immediately at -80°C**

**Storage buffer:**  
PBS only

## Selected Validation Data



Sandwich ELISA standard curve of MP50133-6, GDF15 Monoclonal Matched Antibody Pair, PBS Only. Capture antibody: 68768-3-PBS. Detection antibody: HRP-conjugated 68768-2-PBS. Standard:ag33750. Range: 1.563-100 ng/mL.



Cytometric bead array of cell line supernatant using MP50133-6, GDF-15 Monoclonal Matched Antibody Pair, PBS Only. Capture antibody: 68768-3-PBS. Detection antibody: 68768-2-PBS. Supernatant (50 µL/well) from the following cell lines were assayed: HepG2, LnCap, HT-1080. Complete culture medium was served as blank control.