

ADAM8 Monoclonal Matched Antibody Pair, PBS Only

Catalog Number: **MP50122-1**

Capture Antibody Information

Catalog Number: 68113-2-PBS	Clone ID: 1G2F8	Conjugate: Unconjugated
Host: Mouse	Reactivity: human	Full name: ADAM metallopeptidase domain 8
Isotype: IgG1	GenBank: BC115404	Gene ID: 101
Purification Method: Protein G purification	Immunogen Catalog Number: Ag17262	Affinity: $K_D = 1.69 \times 10^{-10}$ $K_{off} = 5.61 \times 10^{-6}$ $K_{on} = 3.32 \times 10^4$

Detection Antibody Information

Catalog Number: 68113-3-PBS	Clone ID: 2E3F3	Conjugate: Unconjugated
Host: Mouse	Reactivity: human	Full name: ADAM metallopeptidase domain 8
Isotype: IgG1	GenBank: BC115404	Gene ID: 101
Purification Method: Protein G purification	Immunogen Catalog Number: Ag17262	Affinity: $K_D = 9.04 \times 10^{-11}$ $K_{off} = 4.69 \times 10^{-6}$ $K_{on} = 5.18 \times 10^4$

Applications

Tested Applications: Cytometric bead array, Sandwich ELISA	Range: 3.125-100 ng/mL (Cytometric Bead Array) 62.5-4000 pg/mL (Sandwich ELISA)	Recommended Dilutions: It is recommended that this reagent should be titrated in each testing system to obtain optimal results.
--	--	---

Product Information

MP50122-1 targets ADAM8 in immunoassays as a matched antibody pair. Validated in Cytometric bead array, Sandwich ELISA.

Capture antibody: ADAM8 Monoclonal antibody, PBS Only (Capture) 68113-2-PBS (1G2F8). 100 μ g. Concentration 1 mg/mL.

Detection antibody: ADAM8 Monoclonal antibody, PBS Only (Detector) 68113-3-PBS (2E3F3). 100 μ g. Concentration 1 mg/mL.

Unconjugated mouse monoclonal antibody pair in PBS only storage buffer at a concentration of 1 mg/mL, ready for conjugation.

Matched antibody pairs are designed for use in a variety of assays and platforms that require matched antibody pairs.

Antibody use should be optimized for each application and assay.

Storage

Storage:
Store at -80°C.
The product is shipped with ice packs. Upon receipt, store it immediately at -80°C

Storage buffer:
PBS only

For technical support and original validation data for this product please contact:

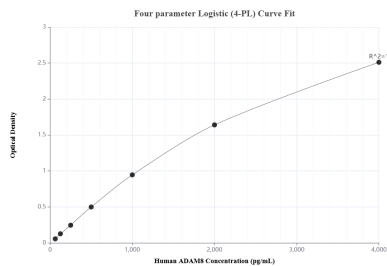
T: 4006900926

E: Proteintech-CN@ptglab.com

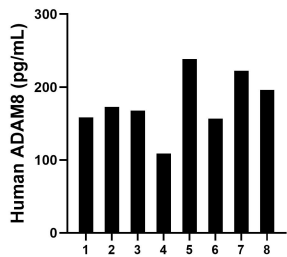
W: ptgcn.com

This product is exclusively available under Proteintech Group brand and is not available to purchase from any other manufacturer.

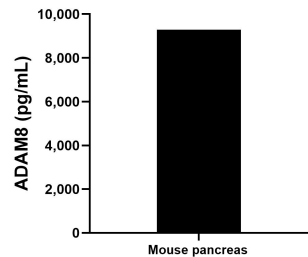
Selected Validation Data



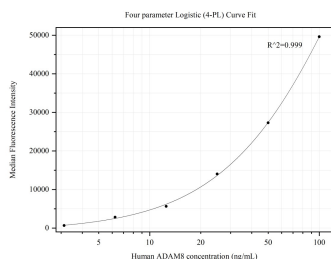
Sandwich ELISA standard curve of MP50122-1, Human ADAM8 Monoclonal Matched Antibody Pair - PBS only. 68113-2-PBS was coated to a plate as the capture antibody and incubated with serial dilutions of standard Ag17262. 68113-3-PBS was HRP conjugated as the detection antibody. Range: 62.5-4000 pg/mL



Serum of eight individual healthy human donors was measured. The ADAM8 concentration of detected samples was determined to be 177.6 pg/mL with a range of 108.9-238.5 pg/mL



The mean ADAM8 concentration was determined to be 9,287.6 pg/mL in mouse pancreas tissue extract based on a 2.3 mg/mL extract load.



Cytometric bead array standard curve of MP50122-1, ADAM8 Monoclonal Matched Antibody Pair, PBS Only. Capture antibody: 68113-2-PBS. Detection antibody: 68113-3-PBS. Standard:Ag17262. Range: 3.125-100 ng/mL