

For Research Use Only

# Beta-2-Microglobulin Monoclonal Matched Antibody Pair, PBS Only



Catalog Number:MP50108-1

## Capture Antibody Information

Catalog Number:  
68395-2-PBS

Host:  
Mouse

Isotype:  
IgG1

Purification Method:  
Protein G purification

Clone ID:  
4B9F9

Reactivity:  
human

GenBank:  
BC032589

Conjugate:  
Unconjugated

Full name:  
beta-2-microglobulin

Gene ID:  
567

## Detection Antibody Information

Catalog Number:  
68395-3-PBS

Host:  
Mouse

Isotype:  
IgG1

Purification Method:  
Protein G purification

Clone ID:  
4D4D5

Reactivity:  
human

GenBank:  
BC032589

Conjugate:  
Unconjugated

Full name:  
beta-2-microglobulin

Gene ID:  
567

## Applications

Tested Applications:  
Cytometric bead array

Range:  
0.098-100 ng/mL (Cytometric Bead Array)

Recommended Dilutions:  
It is recommended that this reagent should be titrated in each testing system to obtain optimal results.

## Product Information

MP50108-1 targets Beta-2-Microglobulin in immunoassays as a matched antibody pair. Validated in Cytometric bead array.

Capture antibody: B2M Monoclonal antibody, PBS Only (Capture) 68395-2-PBS (4B9F9). 100 µg. Concentration 1 mg/mL.

Detection antibody: B2M Monoclonal antibody, PBS Only (Detector) 68395-3-PBS (4D4D5). 100 µg. Concentration 1 mg/mL.

Unconjugated mouse monoclonal antibody pair in PBS only storage buffer at a concentration of 1 mg/mL, ready for conjugation.

Matched antibody pairs are designed for use in a variety of assays and platforms that require matched antibody pairs.

Antibody use should be optimized for each application and assay.

## Storage

Storage:

Store at -80°C.

The product is shipped with ice packs. Upon receipt, store it immediately at -80°C

Storage buffer:

PBS only

For technical support and original validation data for this product please contact:

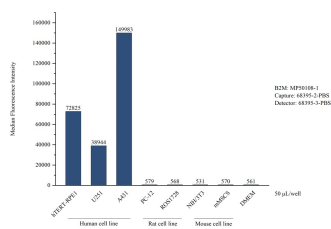
T: 4006900926

E: [Proteintech-CN@ptglab.com](mailto:Proteintech-CN@ptglab.com)

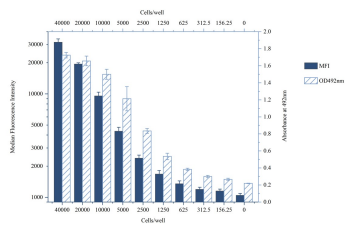
W: [ptgcn.com](http://ptgcn.com)

This product is exclusively available under Proteintech Group brand and is not available to purchase from any other manufacturer.

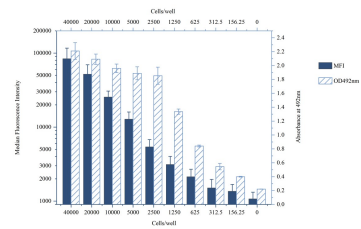
Selected Validation Data



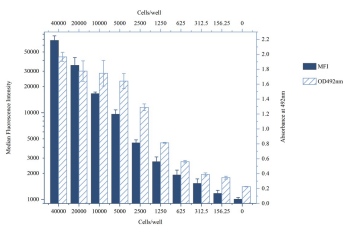
Cytometric bead array of various cell lines supernatant using MP50108-1, B2M Monoclonal Matched Antibody Pair, PBS Only. Capture antibody: 68395-2-PBS. Detection antibody: 68395-3-PBS. Supernatant (50  $\mu$  L/well) from the following cell lines were assayed: hTERT-RPE1, U251, A431, PC-12, ROS1728, NIH/3T3, mMSCS. Complete culture containing DMEM and FBS was served as blank control. Note that this matched antibody pair recognizes human B2M (beta 2



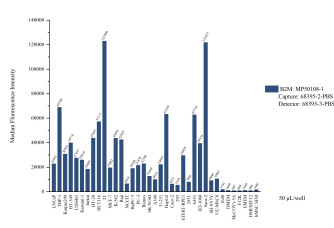
Cytometric bead array of A375 cells supernatant using MP50108-1, B2M Monoclonal Matched Antibody Pair, PBS Only. Capture antibody: 68395-2-PBS. Detection antibody: 68395-3-PBS. Gradient density (indicated at X axis) of A375 cells were inoculated in 96 well plate followed by cultured for 2 days. The supernatant was analyzed using MP50108-1 (B2M Monoclonal Matched Antibody Pair). The signal (Median Fluorescence Intensity) is highly correlated



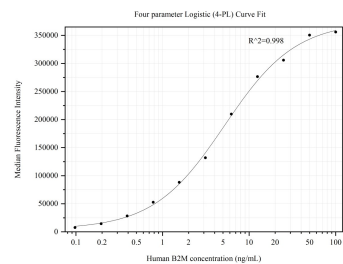
Cytometric bead array of HeLa cells supernatant using MP50108-1, B2M Monoclonal Matched Antibody Pair, PBS Only. Capture antibody: 68395-2-PBS. Detection antibody: 68395-3-PBS. Gradient density (indicated at X axis) of HeLa cells were inoculated in 96 well plate followed by cultured for 2 days. The supernatant was analyzed using MP50108-1 (B2M Monoclonal Matched Antibody Pair). The signal (Median Fluorescence Intensity) is highly correlated



Cytometric bead array of U-251 cells supernatant using MP50108-1, B2M Monoclonal Matched Antibody Pair, PBS Only. Capture antibody: 68395-2-PBS. Detection antibody: 68395-3-PBS. Gradient density (indicated at X axis) of U-251 cells were inoculated in 96 well plate followed by cultured for 2 days. The supernatant was analyzed using MP50108-1 (B2M Monoclonal Matched Antibody Pair). The signal (Median Fluorescence Intensity) is highly correlated



Cytometric bead array of various cell lines supernatant using MP50108-1, B2M Monoclonal Matched Antibody Pair, PBS Only. Capture antibody: 68395-2-PBS. Detection antibody: 68395-3-PBS. Supernatant (50  $\mu$  L/well) from the following cell lines were assayed: LNCaP, THP-1, Karpas299, BT-549, HT-29, U266B1, Kasumi-1, Jurkat, HCT116, TT, MCF-7, K-562, Raji, NCCIT, BxPC-3, PC-3, Ramos, A549, SK-N-SH, U-251, HepG2, Caco-2, 293, 293T, hTERT-RPE1, A431, HT-



Cytometric bead array standard curve of MP50108-1, B2M Monoclonal Matched Antibody Pair, PBS Only. Capture antibody: 68395-2-PBS. Detection antibody: 68395-3-PBS. Standard:Eg31815. Range: 0.098-100 ng/mL