

# TFEB Monoclonal Matched Antibody Pair, PBS Only

Catalog Number: **MP50099-1**

## Capture Antibody Information

Catalog Number: 68632-1-PBS	Clone ID: 1C2D9	Conjugate: Unconjugated
Host: Mouse	Reactivity: human	Full name: transcription factor EB
Isotype: IgG1	GenBank: BC032448	Gene ID: 7942
Purification Method: Protein G purification	Immunogen Catalog Number: Ag24850	

## Detection Antibody Information

Catalog Number: 68632-2-PBS	Clone ID: 1D1B9	Conjugate: Unconjugated
Host: Mouse	Reactivity: human	Full name: transcription factor EB
Isotype: IgG1	GenBank: BC032448	Gene ID: 7942
Purification Method: Protein G purification	Immunogen Catalog Number: Ag24850	

## Applications

Tested Applications: Cytometric bead array	Range: 0.195-50 ng/mL (Cytometric Bead Array)	Recommended Dilutions: It is recommended that this reagent should be titrated in each testing system to obtain optimal results.
---	--	--

## Product Information

MP50099-1 targets TFEB in immunoassays as a matched antibody pair. Validated in Cytometric bead array.

Capture antibody: TFEB Monoclonal antibody, PBS Only (Capture) 68632-1-PBS (1C2D9). 100  $\mu$ g. Concentration 1 mg/mL.

Detection antibody: TFEB Monoclonal antibody, PBS Only (Detector) 68632-2-PBS (1D1B9). 100  $\mu$ g. Concentration 1 mg/mL.

Alternative TFEB matched antibody pairs: MP50099-2

Unconjugated mouse monoclonal antibody pair in PBS only storage buffer at a concentration of 1 mg/mL, ready for conjugation.

Matched antibody pairs are designed for use in a variety of assays and platforms that require matched antibody pairs.

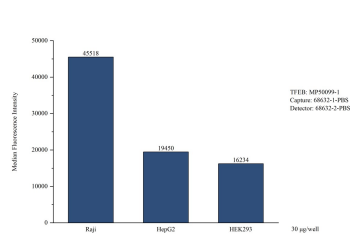
Antibody use should be optimized for each application and assay.

## Storage

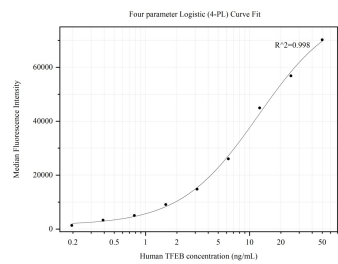
Storage:  
Store at -80°C.  
The product is shipped with ice packs. Upon receipt, store it immediately at -80°C

Storage buffer:  
PBS only

## Selected Validation Data



Cytometric bead array in cell lysate using MP50099-1, TFEB Monoclonal Matched Antibody Pair, PBS Only. Capture antibody: 68632-1-PBS. Detection antibody: 68632-2-PBS. Cell lysate: Raji, HepG2, HEK293.



Cytometric bead array standard curve of MP50099-1, TFEB Monoclonal Matched Antibody Pair, PBS Only. Capture antibody: 68632-1-PBS. Detection antibody: 68632-2-PBS. Standard: Ag24850. Range: 0.195-50 ng/mL.