

PDL1 Monoclonal Matched Antibody Pair, PBS Only

Catalog Number: **MP50090-2**

Capture Antibody Information

Catalog Number: 68745-4-PBS	Clone ID: 2D7D10	Conjugate: Unconjugated
Host: Mouse	Reactivity: human	Full name: CD274 molecule
Isotype: IgG1	GenBank: BC074984	Gene ID: 29126
Purification Method: Protein G Magarose purification	Immunogen Catalog Number: Eg31414	

Detection Antibody Information

Catalog Number: 68745-1-PBS	Clone ID: 2C12F12	Conjugate: Unconjugated
Host: Mouse	Reactivity: human	Full name: CD274 molecule
Isotype: IgG1	GenBank: BC074984	Gene ID: 29126
Purification Method: Protein G purification	Immunogen Catalog Number: Eg31414	

Applications

Tested Applications: Cytometric bead array	Range: 0.781-100 ng/mL (Cytometric Bead Array)	Recommended Dilutions: It is recommended that this reagent should be titrated in each testing system to obtain optimal results.
--	--	---

Product Information

MP50090-2 targets PDL1 in immunoassays as a matched antibody pair. Validated in Cytometric bead array.

Capture antibody: PD-L1/CD274 Monoclonal antibody, PBS Only (Capture) 68745-4-PBS (2D7D10). 100 μ g. Concentration 1 mg/mL.

Detection antibody: PD-L1/CD274 Monoclonal antibody, PBS Only (Detector) 68745-1-PBS (2C12F12). 100 μ g. Concentration 1 mg/mL.

Unconjugated mouse monoclonal antibody pair in PBS only storage buffer at a concentration of 1 mg/mL, ready for conjugation.

Matched antibody pairs are designed for use in a variety of assays and platforms that require matched antibody pairs.

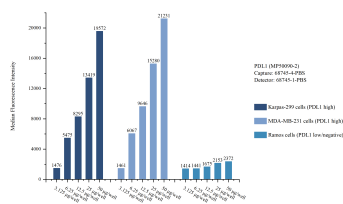
Antibody use should be optimized for each application and assay.

Storage

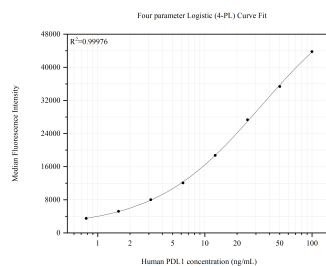
Storage:
Store at -80°C.
The product is shipped with ice packs. Upon receipt, store it immediately at -80°C

Storage buffer:
PBS only

Selected Validation Data



Cytometric bead array sample test of MP50090-2, PDL1 Monoclonal Matched Antibody Pair, PBS Only. Capture antibody: 68745-4-PBS. Detection antibody: 68745-1-PBS.



Cytometric bead array standard curve of MP50090-2, PDL1 Monoclonal Matched Antibody Pair, PBS Only. Capture antibody: 6B745-4-PBS. Detection antibody: 6B745-1-PBS. Standard:Eg31414. Range: 0.781-100 ng/mL