

CXCL8/IL-8 Monoclonal Matched Antibody Pair, PBS Only

Catalog Number:MP50089-1

Capture Antibody Information

Catalog Number:
68744-1-PBS
Host:
Mouse
Isotype:
IgG1
Purification Method:
Protein G purification

Clone ID:
1A6C6
Reactivity:
human
GenBank:
BC013615
Immunogen Catalog Number:
HZ-1318

Conjugate:
Unconjugated
Full name:
interleukin 8
Gene ID:
3576

Detection Antibody Information

Catalog Number:
60141-2-PBS
Host:
Mouse
Isotype:
IgG2a
Purification Method:
Protein A purification

Clone ID:
3D11D5
Reactivity:
human
GenBank:
BC013615
Immunogen Catalog Number:
Ag10552

Conjugate:
Unconjugated
Full name:
interleukin 8
Gene ID:
3576

Applications

Tested Applications:
Sandwich ELISA

Range:
0.049-3.125 ng/mL (Sandwich ELISA)

Recommended Dilutions:
It is recommended that this reagent should be titrated in each testing system to obtain optimal results.

Product Information

MP50089-1 targets CXCL8/IL-8 in immunoassays as a matched antibody pair. Validated in Sandwich ELISA.

Capture antibody: CXCL8/IL-8 Monoclonal antibody, PBS Only (Capture) 68744-1-PBS (1A6C6). 100 µg. Concentration 1 mg/mL.

Detection antibody: CXCL8/IL-8 Monoclonal antibody, PBS Only (Detector) 60141-2-PBS (3D11D5). 100 µg. Concentration 1 mg/mL.

Unconjugated mouse monoclonal antibody pair in PBS only storage buffer at a concentration of 1 mg/mL, ready for conjugation.

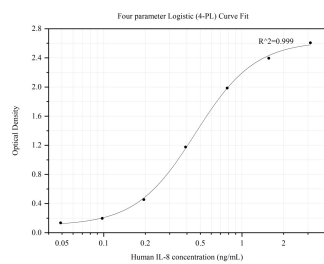
Matched antibody pairs are designed for use in a variety of assays and platforms that require matched antibody pairs.

Antibody use should be optimized for each application and assay.

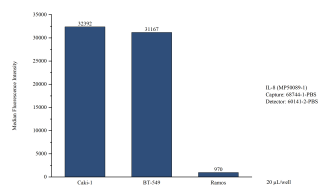
Storage

Storage:
Store at -80°C.
The product is shipped with ice packs. Upon receipt, store it immediately at -80°C
Storage buffer:
PBS only

Selected Validation Data



Sandwich ELISA standard curve of MP50089-1, CXCL8/IL-8 Monoclonal Matched Antibody Pair, PBS Only. Capture antibody: 68744-1-PBS. Detection antibody: HRP-conjugated 60141-2-PBS. Standard: HZ-1318. Range: 0.049-3.125 ng/mL.



Cytometric bead array of cell line supernatant using MP50089-1, CXCL8/IL-8 Monoclonal Matched Antibody Pair, PBS Only. Capture antibody: 68744-1-PBS. Detection antibody: 60141-2-PBS. Supernatant (20 µL/well) from the following cell lines were assayed: Caki-1, BT-549, Ramos.