

gp130/IL6ST Monoclonal Matched Antibody Pair, PBS Only

Catalog Number: MP50086-1

Capture Antibody Information

Catalog Number: 68692-1-PBS	Clone ID: 1A2A1	Conjugate: Unconjugated
Host: Mouse	Reactivity: human	Full name: interleukin 6 signal transducer (gp130, oncostatin M receptor)
Isotype: IgG2a	GenBank: NM_002184.3	Gene ID: 3572
Purification Method: Protein A purification	Immunogen Catalog Number: Eg0654	

Detection Antibody Information

Catalog Number: 68692-2-PBS	Clone ID: 1G9E1	Conjugate: Unconjugated
Host: Mouse	Reactivity: human	Full name: interleukin 6 signal transducer (gp130, oncostatin M receptor)
Isotype: IgG1	GenBank: NM_002184.3	Gene ID: 3572
Purification Method: Protein G purification	Immunogen Catalog Number: Eg0654	

Applications

Tested Applications: Sandwich ELISA	Range: 31.25-2000 pg/mL (Sandwich ELISA)	Recommended Dilutions: It is recommended that this reagent should be titrated in each testing system to obtain optimal results.
---	--	---

Product Information

MP50086-1 targets gp130/IL6ST in immunoassays as a matched antibody pair. Validated in Sandwich ELISA.

Capture antibody: gp130/IL6ST Monoclonal antibody, PBS Only (Capture) 68692-1-PBS (1A2A1). 100 µg. Concentration 1 mg/mL.

Detection antibody: gp130/IL6ST Monoclonal antibody, PBS Only (Detector) 68692-2-PBS (1G9E1). 100 µg. Concentration 1 mg/mL.

Unconjugated mouse monoclonal antibody pair in PBS only storage buffer at a concentration of 1 mg/mL, ready for conjugation.

Matched antibody pairs are designed for use in a variety of assays and platforms that require matched antibody pairs.

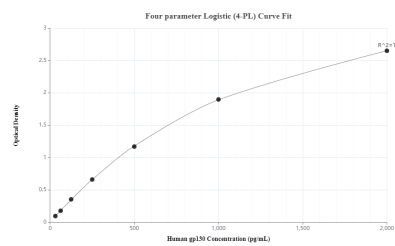
Antibody use should be optimized for each application and assay.

Storage

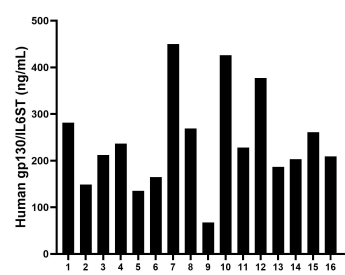
Storage:
Store at -80°C.
The product is shipped with ice packs. Upon receipt, store it immediately at -80°C

Storage buffer:
PBS only

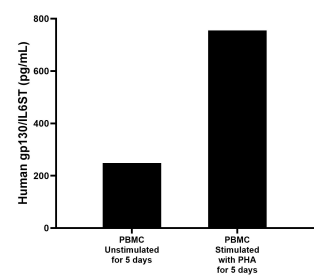
Selected Validation Data



Sandwich ELISA standard curve of MP50086-1, gp130/IL6ST Monoclonal Matched Antibody Pair, PBS Only. Capture antibody: 68692-1-PBS. Detection antibody: 68692-2-PBS. Standard: Eg0654. Range: 31.25-2000 pg/mL



Serum of sixteen individual healthy human donors was measured. The human gp130/IL6ST concentration of detected samples was determined to be 241.00 ng/mL with a range of 67.75 - 450.06 ng/mL



Human peripheral blood mononuclear cells (PBMC) were cultured unstimulated or stimulated with 10 µg/mL PHA for 5 days. The mean gp130/IL6ST concentration was determined to be 248.5 pg/mL in unstimulated PBMC supernatant, 754.8 pg/mL in PHA stimulated PBMC supernatant.