

# S100A14 Monoclonal Matched Antibody Pair, PBS Only

Catalog Number: MP50082-1

## Capture Antibody Information

**Catalog Number:**  
68690-1-PBS  
**Host:**  
Mouse  
**Isotype:**  
IgG1  
**Purification Method:**  
Protein G purification

**Clone ID:**  
1D12A2  
**Reactivity:**  
human  
**GenBank:**  
BC005019  
**Immunogen Catalog Number:**  
Ag29970

**Conjugate:**  
Unconjugated  
**Full name:**  
S100 calcium binding protein A14  
**Gene ID:**  
57402

## Detection Antibody Information

**Catalog Number:**  
68690-2-PBS  
**Host:**  
Mouse  
**Isotype:**  
IgG1  
**Purification Method:**  
Protein G purification

**Clone ID:**  
1F9H11  
**Reactivity:**  
human  
**GenBank:**  
BC005019  
**Immunogen Catalog Number:**  
Ag29970

**Conjugate:**  
Unconjugated  
**Full name:**  
S100 calcium binding protein A14  
**Gene ID:**  
57402

## Applications

**Tested Applications:**  
Sandwich ELISA

**Range:**  
0.156-10 ng/mL (Sandwich ELISA)

**Recommended Dilutions:**  
It is recommended that this reagent should be titrated in each testing system to obtain optimal results.

## Product Information

MP50082-1 targets S100A14 in immunoassays as a matched antibody pair. Validated in Sandwich ELISA.

Capture antibody: S100A14 Monoclonal antibody, PBS Only (Capture) 68690-1-PBS (1D12A2). 100 µg. Concentration 1 mg/mL.

Detection antibody: S100A14 Monoclonal antibody, PBS Only (Detector) 68690-2-PBS (1F9H11). 100 µg. Concentration 1 mg/mL.

Unconjugated mouse monoclonal antibody pair in PBS only storage buffer at a concentration of 1 mg/mL, ready for conjugation.

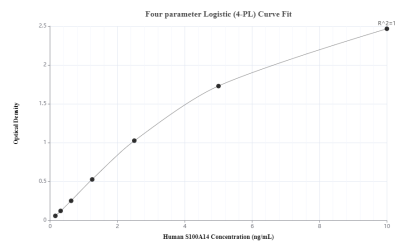
Matched antibody pairs are designed for use in a variety of assays and platforms that require matched antibody pairs.

Antibody use should be optimized for each application and assay.

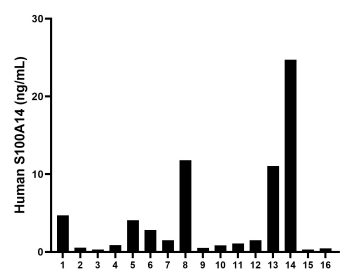
## Storage

**Storage:**  
Store at -80°C.  
**The product is shipped with ice packs. Upon receipt, store it immediately at -80°C**  
**Storage buffer:**  
PBS only

# Selected Validation Data



Sandwich ELISA standard curve of MP50082-1, S100A14 Monoclonal Matched Antibody Pair, PBS Only. Capture antibody: 68690-1-PBS. Detection antibody: 68690-2-PBS. Standard: Ag29970. Range: 0.156-10 ng/mL



Serum of six individual healthy human donors was measured. The human S100A14 concentration of detected samples was determined to be 4.20 ng/mL with a range of 0.31 - 24.71 ng/mL