

VEGFR2/KDR Monoclonal Matched Antibody Pair, PBS Only

Catalog Number: **MP50080-1**

Capture Antibody Information

Catalog Number:
68689-1-PBS
Host:
Mouse
Isotype:
IgG1
Purification Method:
Protein A purification

Clone ID:
3A3F5
Reactivity:
human
GenBank:
NM_002253
Immunogen Catalog Number:
Eg0218

Conjugate:
Unconjugated
Full name:
kinase insert domain receptor (a type III receptor tyrosine kinase)
Gene ID:
3791
Affinity:
 $K_D = 6.32 \times 10^{-12}$
 $K_{off} = 3.94 \times 10^{-6}$
 $K_{on} = 6.24 \times 10^5$

Detection Antibody Information

Catalog Number:
68689-2-PBS
Host:
Mouse
Isotype:
IgG1
Purification Method:
Protein A purification

Clone ID:
3C10A1
Reactivity:
human
GenBank:
NM_002253
Immunogen Catalog Number:
Eg0218

Conjugate:
Unconjugated
Full name:
kinase insert domain receptor (a type III receptor tyrosine kinase)
Gene ID:
3791
Affinity:
 $K_D = 3.25 \times 10^{-10}$
 $K_{off} = 2.90 \times 10^{-4}$
 $K_{on} = 8.91 \times 10^5$

Applications

Tested Applications:
Sandwich ELISA

Range:
78.1-5000 pg/mL (Sandwich ELISA)

Recommended Dilutions:
It is recommended that this reagent should be titrated in each testing system to obtain optimal results.

Product Information

MP50080-1 targets VEGFR2/KDR in immunoassays as a matched antibody pair. Validated in Sandwich ELISA.

Capture antibody: VEGFR2/KDR Monoclonal antibody, PBS Only (Capture) 68689-1-PBS (3A3F5). 100 µg. Concentration 1 mg/mL.

Detection antibody: VEGFR2/KDR Monoclonal antibody, PBS Only (Detector) 68689-2-PBS (3C10A1). 100 µg. Concentration 1 mg/mL.

Unconjugated mouse monoclonal antibody pair in PBS only storage buffer at a concentration of 1 mg/mL, ready for conjugation.

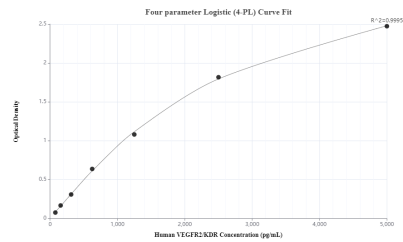
Matched antibody pairs are designed for use in a variety of assays and platforms that require matched antibody pairs.

Antibody use should be optimized for each application and assay.

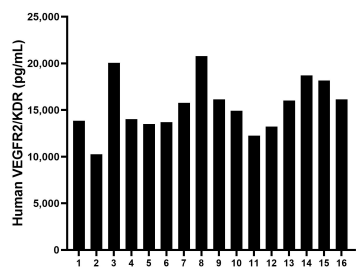
Storage

Storage:
Store at -80°C.
The product is shipped with ice packs. Upon receipt, store it immediately at -80°C
Storage buffer:
PBS only

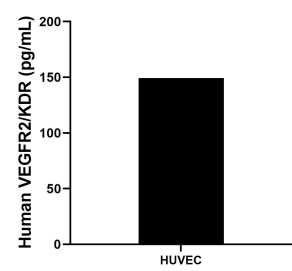
Selected Validation Data



Sandwich ELISA standard curve of MP50080-1, KDR Monoclonal Matched Antibody Pair - PBS only. 68689-1-PBS was coated to a plate as the capture antibody and incubated with serial dilutions of standard Eg0218. 68689-2-PBS was HRP conjugated as the detection antibody. Range: 78.1-5000 pg/mL



Serum of sixteen individual healthy human donors was measured. The human VEGFR2/KDR concentration of detected samples was determined to be 15,470.3 pg/mL with a range of 10,253.3 - 20,780.0 pg/mL



HUVEC human umbilical vein endothelial cells were cultured in EGM-2. Aliquots of the cell culture supernatants were removed, assayed for levels of VEGFR2/KDR and measured 149.4 pg/mL