

# APOE Monoclonal Matched Antibody Pair, PBS Only

Catalog Number: **MP50078-1**

## Capture Antibody Information

Catalog Number: 68696-1-PBS	Clone ID: 1A3C5	Conjugate: Unconjugated
Host: Mouse	Reactivity: human	Full name: Apolipoprotein E
Isotype: IgG1	GenBank: BC003557	Gene ID: 348
Purification Method: Protein G purification	Immunogen Catalog Number: Eg0448	

## Detection Antibody Information

Catalog Number: 68696-2-PBS	Clone ID: 1D1C3	Conjugate: Unconjugated
Host: Mouse	Reactivity: human	Full name: Apolipoprotein E
Isotype: IgG2a	GenBank: BC003557	Gene ID: 348
Purification Method: Protein A purification	Immunogen Catalog Number: Eg0448	

## Applications

Tested Applications: Sandwich ELISA	Range: 0.156-10 ng/mL (Sandwich ELISA)	Recommended Dilutions: It is recommended that this reagent should be titrated in each testing system to obtain optimal results.
--	---	--

## Product Information

MP50078-1 targets APOE in immunoassays as a matched antibody pair. Validated in Sandwich ELISA.

Capture antibody: APOE Monoclonal antibody, PBS Only (Capture) 68696-1-PBS (1A3C5). 100 µg. Concentration 1 mg/mL.

Detection antibody: APOE Monoclonal antibody, PBS Only (Detector) 68696-2-PBS (1D1C3). 100 µg. Concentration 1 mg/mL.

Unconjugated mouse monoclonal antibody pair in PBS only storage buffer at a concentration of 1 mg/mL, ready for conjugation.

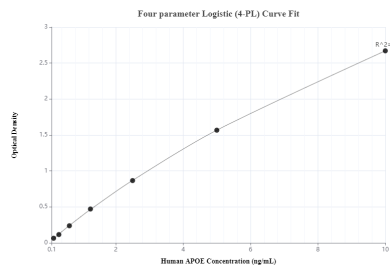
Matched antibody pairs are designed for use in a variety of assays and platforms that require matched antibody pairs.

Antibody use should be optimized for each application and assay.

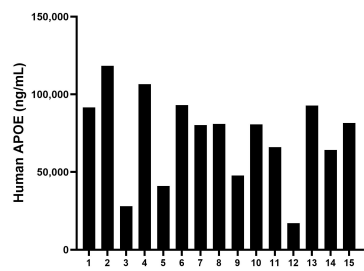
## Storage

Storage:  
Store at -80°C.  
**The product is shipped with ice packs. Upon receipt, store it immediately at -80°C**  
Storage buffer:  
PBS only

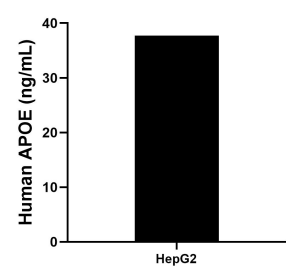
Selected Validation Data



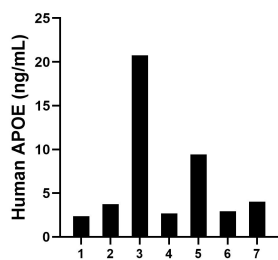
Sandwich ELISA standard curve of MP50078-1, APOE Monoclonal Matched Antibody Pair, PBS Only. Capture antibody: 68696-1-PBS. Detection antibody: 68696-2-PBS. Standard: Eg0448. Range: 0.156-10 ng/mL



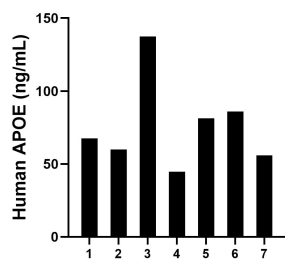
Serum of sixteen individual healthy human donors was measured. The APOE concentration of detected samples was determined to be 72,675.66 ng/mL with a range of 17,060.26-118,380.99 ng/mL



HepG2 cells were cultured in DMEM supplemented with 10% fetal bovine serum, 2 mM L-glutamine, 100 U/mL penicillin, and 100 μg/mL streptomycin sulfate. An aliquot of the cell culture supernate was removed, assayed for human APOE, and measured 37.72 ng/mL



Urine of seven individual healthy human donors was measured. The APOE concentration of detected samples was determined to be 6.56 ng/mL with a range of 2.35-20.75 ng/mL



Human milk of seven individual healthy human donors was measured. The APOE concentration of detected samples was determined to be 76.11 ng/mL with a range of 44.74-137.34 ng/mL