

Transferrin/TF Monoclonal Matched Antibody Pair, PBS Only

Catalog Number:MP50076-1

Capture Antibody Information

Catalog Number:
68697-1-PBS
Host:
Mouse
Isotype:
IgG1
Purification Method:
Protein A purification

Clone ID:
1C10F5
Reactivity:
human
GenBank:
BC059367
Immunogen Catalog Number:
Eg0114

Conjugate:
Unconjugated
Full name:
transferrin
Gene ID:
7018

Detection Antibody Information

Catalog Number:
68697-2-PBS
Host:
Mouse
Isotype:
IgG1
Purification Method:
Protein A purification

Clone ID:
1G5E1
Reactivity:
human
GenBank:
BC059367
Immunogen Catalog Number:
Eg0114

Conjugate:
Unconjugated
Full name:
transferrin
Gene ID:
7018

Applications

Tested Applications:
Sandwich ELISA

Range:
23.4-1500 pg/mL (Sandwich ELISA)

Recommended Dilutions:
It is recommended that this reagent should be titrated in each testing system to obtain optimal results.

Product Information

MP50076-1 targets Transferrin/TF in immunoassays as a matched antibody pair. Validated in Sandwich ELISA.

Capture antibody: Transferrin/TF Monoclonal antibody, PBS Only (Capture) 68697-1-PBS (1C10F5). 100 µg. Concentration 1 mg/mL.

Detection antibody: Transferrin/TF Monoclonal antibody, PBS Only (Detector) 68697-2-PBS (1G5E1). 100 µg. Concentration 1 mg/mL.

Unconjugated mouse monoclonal antibody pair in PBS only storage buffer at a concentration of 1 mg/mL, ready for conjugation.

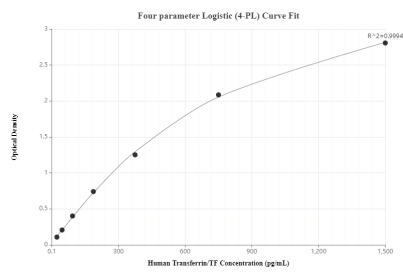
Matched antibody pairs are designed for use in a variety of assays and platforms that require matched antibody pairs.

Antibody use should be optimized for each application and assay.

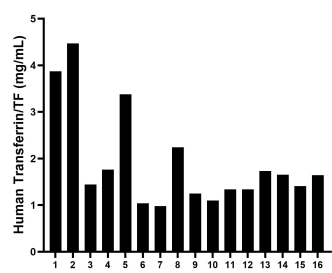
Storage

Storage:
Store at -80°C.
The product is shipped with ice packs. Upon receipt, store it immediately at -80°C
Storage buffer:
PBS only

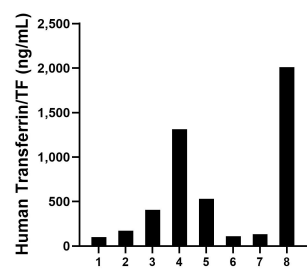
Selected Validation Data



Sandwich ELISA standard curve of MP50076-1, Transferrin/TF Monoclonal Matched Antibody Pair, PBS Only. Capture antibody: 68697-1-PBS. Detection antibody: 68697-2-PBS. Standard: Eg0114. Range: 23.4-1500 pg/mL



Serum of sixteen individual healthy human donors was measured. The Transferrin/TF concentration of detected samples was determined to be 1.9 mg/mL with a range of 1.0-4.5 mg/mL



Urine of eight individual healthy human donors was measured. The Transferrin/TF concentration of detected samples was determined to be 597.9 ng/mL with a range of 102.5-2,011.6 ng/mL