

# CD200 Monoclonal Matched Antibody Pair, PBS Only

Catalog Number: MP50062-1

## Capture Antibody Information

**Catalog Number:**  
68700-1-PBS

**Host:**  
Mouse

**Isotype:**  
IgG1

**Purification Method:**  
Protein G purification

**Clone ID:**  
1B1C10

**Reactivity:**  
human

**GenBank:**  
BC022522

**Immunogen Catalog Number:**  
Eg0006

**Conjugate:**  
Unconjugated

**Full name:**  
CD200 molecule

**Gene ID:**  
4345

## Detection Antibody Information

**Catalog Number:**  
68700-2-PBS

**Host:**  
Mouse

**Isotype:**  
IgG2b

**Purification Method:**  
Protein A purification

**Clone ID:**  
1A1B5

**Reactivity:**  
human

**GenBank:**  
BC022522

**Immunogen Catalog Number:**  
Eg0006

**Conjugate:**  
Unconjugated

**Full name:**  
CD200 molecule

**Gene ID:**  
4345

**Affinity:**  
 $K_D = 5.90 \times 10^{-8}$   
 $K_{Off} = 5.13 \times 10^{-3}$   
 $K_{On} = 8.70 \times 10^4$

## Applications

**Tested Applications:**  
Sandwich ELISA

**Range:**  
31.3-2000 pg/mL (Sandwich ELISA)

**Recommended Dilutions:**  
It is recommended that this reagent should be titrated in each testing system to obtain optimal results.

## Product Information

MP50062-1 targets CD200 in immunoassays as a matched antibody pair. Validated in Sandwich ELISA.

Capture antibody: CD200 Monoclonal antibody, PBS Only (Capture) 68700-1-PBS (1B1C10). 100 µg. Concentration 1 mg/mL.

Detection antibody: CD200 Monoclonal antibody, PBS Only (Detector) 68700-2-PBS (1A1B5). 100 µg. Concentration 1 mg/mL.

Unconjugated mouse monoclonal antibody pair in PBS only storage buffer at a concentration of 1 mg/mL, ready for conjugation.

Matched antibody pairs are designed for use in a variety of assays and platforms that require matched antibody pairs.

Antibody use should be optimized for each application and assay.

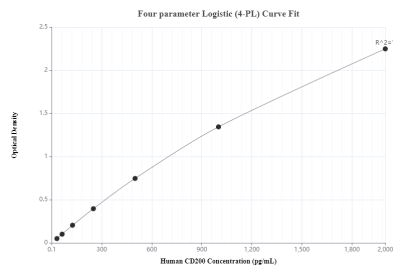
## Storage

**Storage:**  
Store at -80°C.

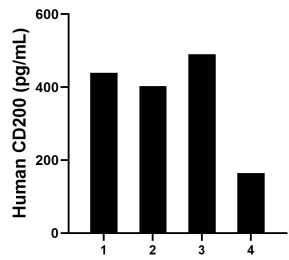
**The product is shipped with ice packs. Upon receipt, store it immediately at -80°C**

**Storage buffer:**  
PBS only

## Selected Validation Data



Sandwich ELISA standard curve of MP50062-1, CD200 Monoclonal Matched Antibody Pair - PBS only. 68700-1-PBS was coated to a plate as the capture antibody and incubated with serial dilutions of standard Eg0006. 68700-2-PBS was HRP conjugated as the detection antibody. Range: 31.3-2000 pg/mL.



Serum of four individual healthy human donors was measured. The human CD200 concentration of detected samples was determined to be 374.2 pg/mL with a range of 164.2 - 490.7 pg/mL.