

# VISTA Monoclonal Matched Antibody Pair, PBS Only

Catalog Number: MP50058-1

## Capture Antibody Information

**Catalog Number:**  
68676-1-PBS

**Host:**  
Mouse

**Isotype:**  
IgG1

**Purification Method:**  
Protein G purification

**Clone ID:**  
2B3H6

**Reactivity:**  
human

**GenBank:**  
BC020568

**Immunogen Catalog Number:**  
Eg0017

**Conjugate:**  
Unconjugated

**Full name:**  
chromosome 10 open reading frame 54

**Gene ID:**  
64115

## Detection Antibody Information

**Catalog Number:**  
68676-2-PBS

**Host:**  
Mouse

**Isotype:**  
IgG1

**Purification Method:**  
Protein A purification

**Clone ID:**  
1D5C3

**Reactivity:**  
human

**GenBank:**  
BC020568

**Immunogen Catalog Number:**  
Eg0017

**Conjugate:**  
Unconjugated

**Full name:**  
chromosome 10 open reading frame 54

**Gene ID:**  
64115

**Affinity:**  
 $K_D = 6.58 \times 10^{-11}$   
 $K_{Off} = 3.67 \times 10^{-6}$   
 $K_{On} = 5.58 \times 10^4$

## Applications

**Tested Applications:**  
Sandwich ELISA

**Range:**  
0.156-10 ng/mL (Sandwich ELISA)

**Recommended Dilutions:**  
It is recommended that this reagent should be titrated in each testing system to obtain optimal results.

## Product Information

MP50058-1 targets VISTA in immunoassays as a matched antibody pair. Validated in Sandwich ELISA.

Capture antibody: VISTA Monoclonal antibody, PBS Only (Capture) 68676-1-PBS (2B3H6). 100 µg. Concentration 1 mg/mL.

Detection antibody: VISTA Monoclonal antibody, PBS Only (Detector) 68676-2-PBS (1D5C3). 100 µg. Concentration 1 mg/mL.

Unconjugated mouse monoclonal antibody pair in PBS only storage buffer at a concentration of 1 mg/mL, ready for conjugation.

Matched antibody pairs are designed for use in a variety of assays and platforms that require matched antibody pairs.

Antibody use should be optimized for each application and assay.

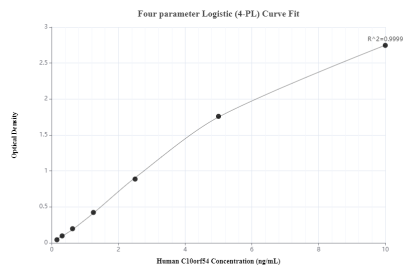
## Storage

**Storage:**  
Store at -80°C.

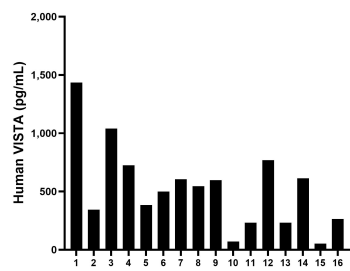
**The product is shipped with ice packs. Upon receipt, store it immediately at -80°C**

**Storage buffer:**  
PBS only

## Selected Validation Data



Sandwich ELISA standard curve of MP50058-1, VISTA Monoclonal Matched Antibody Pair - PBS only. 68676-1-PBS was coated to a plate as the capture antibody and incubated with serial dilutions of standard Eg0017. 68676-2-PBS was HRP conjugated as the detection antibody. Range: 0.156-10 ng/mL



Serum of sixteen individual healthy human donors was measured. The VISTA concentration of detected samples was determined to be 525.25 pg/mL with a range of 52.46-1,435.23 pg/mL