

# Thrombopoietin Monoclonal Matched Antibody Pair, PBS Only

Catalog Number: **MP50053-1**

## Capture Antibody Information

**Catalog Number:**  
68672-1-PBS  
**Host:**  
Mouse  
**Isotype:**  
IgG2b  
**Purification Method:**  
Protein A purification

**Clone ID:**  
1B7D1  
**Reactivity:**  
human  
**GenBank:**  
**Immunogen Catalog Number:**  
HZ-1248

**Conjugate:**  
Unconjugated  
**Full name:**  
thrombopoietin  
**Gene ID:**  
7066  
**Affinity:**  
 $K_D = 2.84 \times 10^{-9}$   
 $K_{Off} = 3.32 \times 10^{-4}$   
 $K_{On} = 1.17 \times 10^5$

## Detection Antibody Information

**Catalog Number:**  
68672-2-PBS  
**Host:**  
Mouse  
**Isotype:**  
IgG1  
**Purification Method:**  
Protein G purification

**Clone ID:**  
1A8G2  
**Reactivity:**  
human  
**GenBank:**  
**Immunogen Catalog Number:**  
HZ-1248

**Conjugate:**  
Unconjugated  
**Full name:**  
thrombopoietin  
**Gene ID:**  
7066  
**Affinity:**  
 $K_D = 1.85 \times 10^{-9}$   
 $K_{Off} = 3.08 \times 10^{-4}$   
 $K_{On} = 1.67 \times 10^5$

## Applications

**Tested Applications:**  
Sandwich ELISA

**Range:**  
15.6-1000 pg/mL (Sandwich ELISA)

**Recommended Dilutions:**  
It is recommended that this reagent should be titrated in each testing system to obtain optimal results.

## Product Information

MP50053-1 targets Thrombopoietin in immunoassays as a matched antibody pair. Validated in Sandwich ELISA.

Capture antibody: Thrombopoietin Monoclonal antibody, PBS Only (Capture) 68672-1-PBS (1B7D1). 100 µg. Concentration 1 mg/mL.

Detection antibody: Thrombopoietin Monoclonal antibody, PBS Only (Detector) 68672-2-PBS (1A8G2). 100 µg. Concentration 1 mg/mL.

Unconjugated mouse monoclonal antibody pair in PBS only storage buffer at a concentration of 1 mg/mL, ready for conjugation.

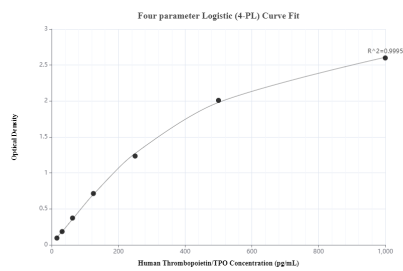
Matched antibody pairs are designed for use in a variety of assays and platforms that require matched antibody pairs.

Antibody use should be optimized for each application and assay.

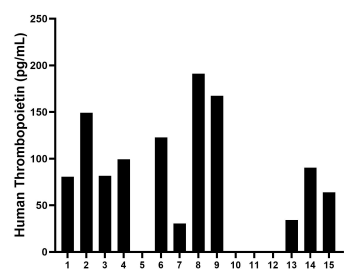
## Storage

**Storage:**  
Store at -80°C.  
**The product is shipped with ice packs. Upon receipt, store it immediately at -80°C**  
**Storage buffer:**  
PBS only

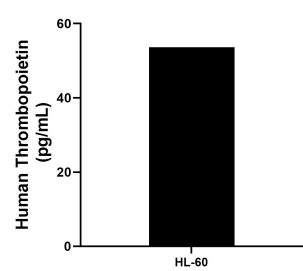
## Selected Validation Data



Sandwich ELISA standard curve of MP50053-1, THPO Monoclonal Matched Antibody Pair, PBS Only. 68672-1-PBS was coated to a plate as the capture antibody and incubated with serial dilutions of standard HZ-1248. 68672-2-PBS was HRP conjugated as detection antibody. Range: 15.6-1000 pg/mL



Serum of sixteen individual healthy human donors was measured. The human Thrombopoietin concentration of detected samples was determined to be 100.9 pg/mL with a range of ND - 191.1 pg/mL



HL-60 were cultured in DMEM supplemented with 10% fetal bovine serum, 2.5 mM L-glutamine, 100 U/mL penicillin, and 100  $\mu$ g/mL streptomycin sulfate. An aliquot of the cell culture supernate was removed, assayed for human Thrombopoietin, and measured 53.6 pg/mL