

# DPP4/CD26 Monoclonal Matched Antibody Pair, PBS Only

Catalog Number:MP50051-1

## Capture Antibody Information

<b>Catalog Number:</b> 68383-1-PBS	<b>Clone ID:</b> 2G6D11	<b>Conjugate:</b> Unconjugated
<b>Host:</b> Mouse	<b>Reactivity:</b> human, pig, rabbit	<b>Full name:</b> dipeptidyl-peptidase 4
<b>Isotype:</b> IgG1	<b>GenBank:</b> BC013329	<b>Gene ID:</b> 1803
<b>Purification Method:</b> Protein G purification	<b>Immunogen Catalog Number:</b> Eg0157	

## Detection Antibody Information

<b>Catalog Number:</b> 68383-2-PBS	<b>Clone ID:</b> 1G3B4	<b>Conjugate:</b> Unconjugated
<b>Host:</b> Mouse	<b>Reactivity:</b> human	<b>Full name:</b> dipeptidyl-peptidase 4
<b>Isotype:</b> IgG2a	<b>GenBank:</b> BC013329	<b>Gene ID:</b> 1803
<b>Purification Method:</b> Protein A purification	<b>Immunogen Catalog Number:</b> Eg0157	

## Applications

<b>Tested Applications:</b> Sandwich ELISA	<b>Range:</b> 0.313-20 ng/mL (Sandwich ELISA)	<b>Recommended Dilutions:</b> It is recommended that this reagent should be titrated in each testing system to obtain optimal results.
---	--	---

## Product Information

MP50051-1 targets DPP4/CD26 in immunoassays as a matched antibody pair. Validated in Sandwich ELISA.

Capture antibody: DPP4/CD26 Monoclonal antibody, PBS Only (Capture) 68383-1-PBS (2G6D11). 100 µg. Concentration 1 mg/mL.

Detection antibody: DPP4/CD26 Monoclonal antibody, PBS Only (Detector) 68383-2-PBS (1G3B4). 100 µg. Concentration 1 mg/mL.

Unconjugated mouse monoclonal antibody pair in PBS only storage buffer at a concentration of 1 mg/mL, ready for conjugation.

Matched antibody pairs are designed for use in a variety of assays and platforms that require matched antibody pairs.

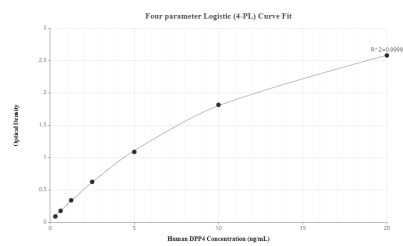
Antibody use should be optimized for each application and assay.

## Storage

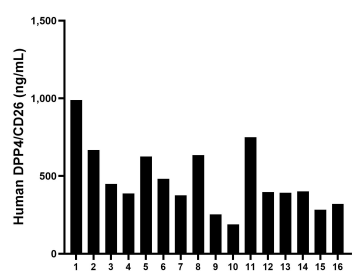
**Storage:**  
Store at -80°C.  
**The product is shipped with ice packs. Upon receipt, store it immediately at -80°C**

**Storage buffer:**  
PBS only

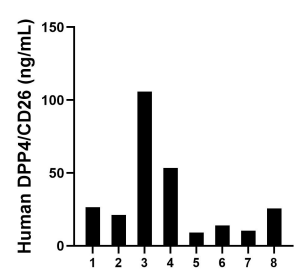
## Selected Validation Data



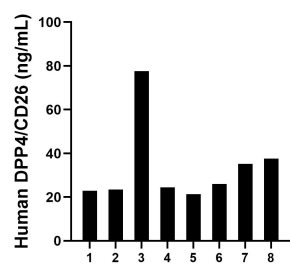
Sandwich ELISA standard curve of MP50051-1, DPP4 Monoclonal Matched Antibody Pair, PBS Only. Capture antibody: 68383-1-PBS. Detection antibody: 68383-2-PBS. Standard: Eg0157. Range: 0.313-20 ng/mL



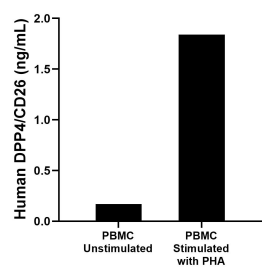
Serum of sixteen individual healthy human donors was measured. The DPP4/CD26 concentration of detected samples was determined to be 475.10 ng/mL with a range of 189.59-990.11 ng/mL



Urine of eight individual healthy human donors was measured. The DPP4/CD26 concentration of detected samples was determined to be 33.23 ng/mL with a range of 9.07-105.84 ng/mL



Saliva of eight individual healthy human donors was measured. The DPP4/CD26 concentration of detected samples was determined to be 33.57 ng/mL with a range of 21.27-77.69 ng/mL



Human peripheral blood mononuclear cells (PBMC) were cultured unstimulated or stimulated with 10  $\mu$ g/mL PHA for 5 days. The mean DPP4/CD26 concentration was determined to be 0.17 ng/mL in unstimulated PBMC supernatant, 1.84 ng/mL in PHA stimulated PBMC supernatant.