

MMP1 Monoclonal Matched Antibody Pair, PBS Only

Catalog Number: **MP50047-1**

Capture Antibody Information

Catalog Number: 68705-1-PBS	Clone ID: 1E11C5	Conjugate: Unconjugated
Host: Mouse	Reactivity: human	Full name: matrix metalloproteinase 1 (interstitial collagenase)
Isotype: IgG1	GenBank: BC013875	Gene ID: 4312
Purification Method: Protein G Magarose purification	Immunogen Catalog Number: Ag0547	

Detection Antibody Information

Catalog Number: 68706-1-PBS	Clone ID: 1H9E12	Conjugate: Unconjugated
Host: Mouse	Reactivity: human	Full name: matrix metalloproteinase 1 (interstitial collagenase)
Isotype: IgG2a	GenBank: BC013875	Gene ID: 4312
Purification Method: Protein A purification	Immunogen Catalog Number: Ag0547	

Applications

Tested Applications: Sandwich ELISA	Range: 78.1-5000 pg/mL (Sandwich ELISA)	Recommended Dilutions: It is recommended that this reagent should be titrated in each testing system to obtain optimal results.
---	---	---

Product Information

MP50047-1 targets MMP1 in immunoassays as a matched antibody pair. Validated in Sandwich ELISA.

Capture antibody: MMP1 Monoclonal antibody, PBS Only (Capture) 68705-1-PBS (1E11C5). 100 µg. Concentration 1 mg/mL.

Detection antibody: MMP1 Monoclonal antibody, PBS Only (Detector) 68706-1-PBS (1H9E12). 100 µg. Concentration 1 mg/mL.

Unconjugated mouse monoclonal antibody pair in PBS only storage buffer at a concentration of 1 mg/mL, ready for conjugation.

Matched antibody pairs are designed for use in a variety of assays and platforms that require matched antibody pairs.

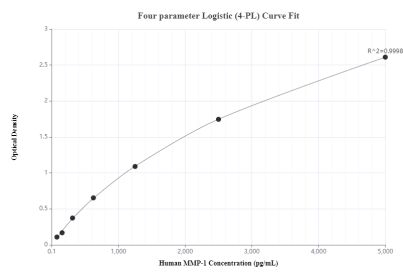
Antibody use should be optimized for each application and assay.

Storage

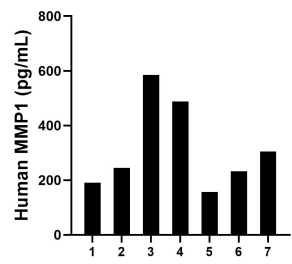
Storage:
Store at -80°C.
The product is shipped with ice packs. Upon receipt, store it immediately at -80°C

Storage buffer:
PBS only

Selected Validation Data



Sandwich ELISA standard curve of MP50047-1, MMP1 Monoclonal Matched Antibody Pair, PBS Only. Capture antibody: 68705-1-PBS. Detection antibody: 68706-1-PBS. Standard: Eg0527. Range: 78.1-5000 pg/mL.



Serum of seven individual healthy human donors was measured. The MMP1 concentration of detected samples was determined to be 314.7 pg/mL with a range of 157.5-584.8 pg/mL.