

# GPNMB Monoclonal Matched Antibody Pair, PBS Only

Catalog Number: **MP50045-2**

## Capture Antibody Information

**Catalog Number:**  
66926-2-PBS  
**Host:**  
Mouse  
**Isotype:**  
IgG1  
**Purification Method:**  
Protein G purification

**Clone ID:**  
2H3E12  
**Reactivity:**  
human  
**GenBank:**  
BC011595  
**Immunogen Catalog Number:**  
Ag26747

**Conjugate:**  
Unconjugated  
**Full name:**  
glycoprotein (transmembrane) nmb  
**Gene ID:**  
10457  
**Affinity:**  
 $K_D = 1.03 \times 10^{-10}$   
 $K_{Off} = 1.53 \times 10^{-6}$   
 $K_{On} = 1.49 \times 10^4$

## Detection Antibody Information

**Catalog Number:**  
66926-3-PBS  
**Host:**  
Mouse  
**Isotype:**  
IgG2a  
**Purification Method:**  
Protein A purification

**Clone ID:**  
1G4B8  
**Reactivity:**  
human  
**GenBank:**  
BC011595  
**Immunogen Catalog Number:**  
Ag26747

**Conjugate:**  
Unconjugated  
**Full name:**  
glycoprotein (transmembrane) nmb  
**Gene ID:**  
10457  
**Affinity:**  
 $K_D = 3.05 \times 10^{-10}$   
 $K_{Off} = 2.25 \times 10^{-6}$   
 $K_{On} = 7.38 \times 10^3$

## Applications

**Tested Applications:**  
Sandwich ELISA

**Range:**  
19.5-1250 pg/mL (Sandwich ELISA)

**Recommended Dilutions:**  
It is recommended that this reagent should be titrated in each testing system to obtain optimal results.

## Product Information

MP50045-2 targets GPNMB in immunoassays as a matched antibody pair. Validated in Sandwich ELISA.

Capture antibody: GPNMB Monoclonal antibody, PBS Only (Capture) 66926-2-PBS (2H3E12). 100  $\mu$ g. Concentration 1 mg/mL.

Detection antibody: GPNMB Monoclonal antibody, PBS Only (Detector) 66926-3-PBS (1G4B8). 100  $\mu$ g. Concentration 1 mg/mL.

Unconjugated mouse monoclonal antibody pair in PBS only storage buffer at a concentration of 1 mg/mL, ready for conjugation.

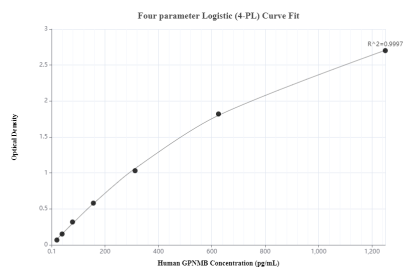
Matched antibody pairs are designed for use in a variety of assays and platforms that require matched antibody pairs.

Antibody use should be optimized for each application and assay.

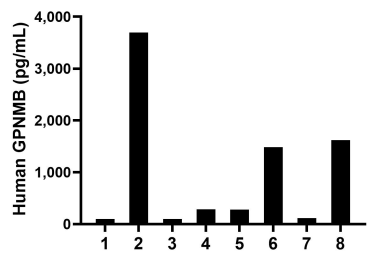
## Storage

**Storage:**  
Store at -80°C.  
**The product is shipped with ice packs. Upon receipt, store it immediately at -80°C**  
**Storage buffer:**  
PBS only

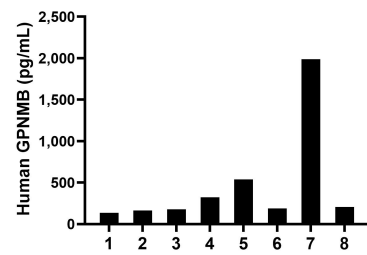
## Selected Validation Data



Sandwich ELISA standard curve of MP50045-2, GPNMB Monoclonal Matched Antibody Pair - PBS only. 66926-2-PBS was coated to a plate as the capture antibody and incubated with serial dilutions of standard Ag26747. 66926-3-PBS was HRP conjugated as the detection antibody. Range: 19.5-1250 pg/mL



Serum of eight individual healthy human donors was measured. The GPNMB concentration of detected samples was determined to be 959.1 pg/mL with a range of 97.1-3,693.3 pg/mL



Plasma of eight individual healthy human donors was measured. The GPNMB concentration of detected samples was determined to be 465.1 pg/mL with a range of 135.4-1,986.9 pg/mL