

CD138/Syndecan-1 Monoclonal Matched Antibody Pair, PBS Only

Catalog Number: **MP50044-1**

Capture Antibody Information

Catalog Number: 60185-1-PBS	Clone ID: 1B6A2	Conjugate: Unconjugated
Host: Mouse	Reactivity: human	Full name: syndecan 1
Isotype: IgG1	GenBank: BC008765	Gene ID: 6382
Purification Method: Protein G purification	Immunogen Catalog Number: Ag0823	

Detection Antibody Information

Catalog Number: 67155-1-PBS	Clone ID: 4F3A8	Conjugate: Unconjugated
Host: Mouse	Reactivity: human	Full name: syndecan 1
Isotype: IgG2a	GenBank: BC008765	Gene ID: 6382
Purification Method: Protein A purification	Immunogen Catalog Number: Ag0823	

Applications

Tested Applications: Sandwich ELISA	Range: 0.188-12 ng/mL (Sandwich ELISA)	Recommended Dilutions: It is recommended that this reagent should be titrated in each testing system to obtain optimal results.
--	---	--

Product Information

MP50044-1 targets CD138/Syndecan-1 in immunoassays as a matched antibody pair. Validated in Sandwich ELISA.

Capture antibody: CD138/Syndecan-1 Monoclonal antibody, PBS Only (Capture) 60185-1-PBS (1B6A2). 100 µg. Concentration 1 mg/mL.

Detection antibody: CD138/Syndecan-1 Monoclonal antibody, PBS Only (Detector) 67155-1-PBS (4F3A8). 100 µg. Concentration 1 mg/mL.

Unconjugated mouse monoclonal antibody pair in PBS only storage buffer at a concentration of 1 mg/mL, ready for conjugation.

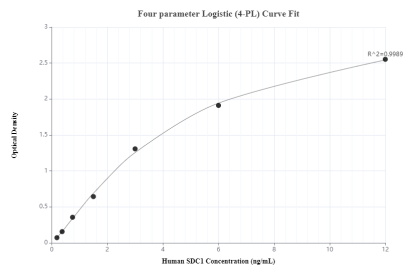
Matched antibody pairs are designed for use in a variety of assays and platforms that require matched antibody pairs.

Antibody use should be optimized for each application and assay.

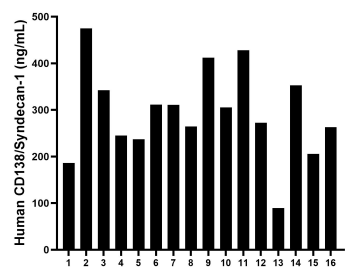
Storage

Storage:
Store at -80°C.
The product is shipped with ice packs. Upon receipt, store it immediately at -80°C
Storage buffer:
PBS only

Selected Validation Data



Sandwich ELISA standard curve of MP50044-1, SDC1,CD138 Monoclonal Matched Antibody Pair, PBS Only. Capture antibody: 60185-1-PBS. Detection antibody: 67155-1-PBS. Standard: Ag17733. Range: 0.188-12 ng/mL



Plasma of sixteen individual healthy human donors was measured. The CD138/Syndecan-1 concentration of detected samples was determined to be 293.79 ng/mL with a range of 89.65-474.60 ng/mL